

Report To:	ENVIRONMENT & REGENERATION COMMITTEE	Date: 1 June 2016
Report By:	CORPORATE DIRECTOR, ENVIRONMENT, REGENERATION & RESOURCES	Report No: ERC/ENV/RG/16.276
Contact Officer:	Robert Graham	Contact No: 01475 714800
Subject:	GOUROCK PARKING STRATEGY	

1.0 PURPOSE

- 1.1 The purpose of the report is to advise Committee of the outcome of parking surveys and public consultation undertaken following the regeneration of Gourock Town Centre and to make recommendations on how the existing parking should be amended.

2.0 SUMMARY

- 2.1 As part of the Villages Strategy, which was reported to Committee on 16 June 2015, approval was given to introduce free parking with a 3 hour waiting limit in half of the Kempock Street car park whilst the other half was to remain free with no time limit.
- 2.2 Since the Traffic Regulation Order ("TRO") became effective on 18 January 2016, Ward Members and officers have received a number of complaints. As a result, Ward Members have asked that the Parking Strategy for Gourock be revisited to take account of current parking habits.
- 2.3 Parking surveys were undertaken on-street on Kempock Street and Lower Kempock Street and in the Kempock Street West, Kempock Street East, Station Road North and Station Road South car parks. These surveys were undertaken before and after Gourock Outdoor Pool opened for the season.
- 2.4 A public consultation exercise was undertaken to find out the view and experiences of residents, staff and visitors to the town. This sought their views on the current parking arrangements and asked what would improve their parking experience.

3.0 RECOMMENDATIONS

- 3.1 That the Committee note the findings of the parking surveys and public consultation.
- 3.2 That the Committee agree the suspension of standing orders in order to approve the following proposed variations to the TROs for Gourock:-
- Change the designated uses of Kempock Street West and Kempock Street East car parks
 - Kempock Street West car park to become the short stay car park with a reduced number of short stay spaces (from 83 to 45)
 - Kempock Street East car park to become the long stay car park with an increased number of long stay spaces (from 85 to 123)
 - No changes to Station Road North and Station Road South car parks
 - On-street parking in Lower Kempock Street to be increased to 3 hours with no change to the 1 hour restriction on Kempock Street

all as outlined in Section 7.0 of this report.

- 3.3 That it be remitted to the Head of Environmental and Commercial Services and the Head of Legal and Property Services to prepare and promote TROs to progress and enforce the proposed strategy.

Robert Graham
Head of Environmental and Commercial Services

4.0 BACKGROUND

- 4.1 Following the introduction of Decriminalised Parking Enforcement in Inverclyde on 6 October 2014, the Council undertook to carry out a review of parking in all of the towns and villages.
- 4.2 As a result, letters were issued to the Community Councils seeking their views on what changes, if any, were required within their area. Gourrock Community Council responded asking that a 3 hour time limit be introduced in the Kempock Street car park to prevent commuters from taking up spaces all day.
- 4.3 Councillor McEleny also undertook consultation on Kempock Street with 45% of respondents believing that the car park should provide long and short stay parking.
- 4.4 A report was then submitted to a Special Meeting of this Committee on 16 June 2015. Officers suggested in the report that 75% of the car park should have a 3 hour time limit and 25% should have no time limit. Members asked that the split be changed to 50% / 50%. A TRO was introduced to this effect and came into effect on 18 January 2016.
- 4.5 Since the introduction of the new TRO, Ward Members and Council Officers have received comments from patrons as the long stay car park is well used and the short stay car park is not being fully utilised. Use of the short stay car park has increased over recent months.
- 4.6 Officers met with Ward Members to review the comments and possible options on a way forward for parking in the town centre. As a result it was agreed that in order to take more informed decisions about parking in the town centre it would be necessary to undertake a review of on and off-street parking usage.
- 4.7 The parking surveys were undertaken in Kempock Street West, Kempock Street East, Station Road North and Station Road South car parks as well as Kempock Street and Lower Kempock Street on 23, 26 and 28 April (before the Pool opened) and 14, 17 and 19 May (after the Pool opened).
- 4.8 In order to give the public an opportunity to comment on the current parking arrangements, a questionnaire was hand delivered to each business and household on Kempock Street and Lower Kempock Street. The questionnaire was also posted on the Council's website and promoted via social media to give visitors to the town centre the opportunity to comment.

5.0 PARKING SURVEY FINDINGS

- 5.1 Parking surveys were undertaken on Saturday 23, Tuesday 26 and Thursday 28 April 2016 prior to the opening of Gourrock Outdoor Pool on Friday 6 May 2016. The surveys were repeated following the opening on the Pool on Saturday 14, Tuesday 17 and Thursday 19 May 2016.
- 5.2 Part of each vehicle registration was noted for each vehicle parked on Kempock Street and Lower Kempock Street and in Kempock Street West, Kempock Street East, Station Road North and Station Road South car parks every 15 minutes between 07:00 and 19:00 hours.
- 5.3 Analysis of the data is presented in Appendix 1 which compares the use of the car parks on weekdays and weekends before and after the Pool opened for the season. Appendix 1
- 5.4 The analysis highlights that Kempock Street West car park (free, long stay) is generally full during working hours (09:00-17:00 hours) during weekdays and weekends, however, following the opening of the Pool its use increased by up to 5%. The average occupancy of the car park between 09:00 and 17:00 hours is summarised in Table 1.

Table 1: Average Parking Occupancy – Kempock Street West (free, long stay)

	Average Parking Occupancy (09:00-17:00 hours)		Difference
	Before Pool Opening	After Pool Opening	
Saturday	91%	96%	+5%
Tuesday	91%	93%	+2%
Thursday	93%	94%	+1%

- 5.5 Use of the short stay (free, 3 hours) increased following the opening of the pool on all of the survey days. The largest increase was witnessed on the Saturday when the weather was very hot and when families are more likely to attend the pool. Parking also increased on the weekdays which shows that more people are using the short stay parking during seasonal periods. The average occupancy of the car park between 09:00 and 17:00 hours is summarised in Table 2.

Table 2: Average Parking Occupancy – Kempock Street East (free, short stay)

	Average Parking Occupancy (09:00-17:00 hours)		Difference
	Before Pool Opening	After Pool Opening	
Saturday	45%	71%	+26%
Tuesday	38%	58%	+20%
Thursday	39%	62%	+23%

- 5.6 The two Pay and Display car parks on Station Road were used to varying degrees. The Station Road North car park which is closer to the station and town centre was more widely used than the smaller Station Road South car park. Both of these car parks are charged at £1 per day which is cheaper than the adjacent car parks which are owned by Network Rail. The average occupancy of the car parks between 09:00 and 17:00 hours is summarised in Tables 3 and 4.

Table 3: Average Parking Occupancy – Station Road North (£1 per day)

	Average Parking Occupancy (09:00-17:00 hours)		Difference
	Before Pool Opening	After Pool Opening	
Saturday	28%	40%	+12%
Tuesday	75%	90%	+15%
Thursday	81%	71%	-10%

Table 4: Average Parking Occupancy – Station Road South (£1 per day)

	Average Parking Occupancy (09:00-17:00 hours)		Difference
	Before Pool Opening	After Pool Opening	
Saturday	3%	30%	+27%
Tuesday	43%	31%	-12%
Thursday	41%	61%	+20%

- 5.7 On-street parking is limited to 1 hour on Kempock Street and Lower Kempock Street. The use of these streets is utilised to different extents. It can be seen that Kempock Street is well used and has a good turnover of spaces. This is to the benefit of businesses on the street as visitors can park to visit shops, attend appointments, etc. Lower Kempock Street is less used with a maximum occupancy of 32%. The average occupancy of the on-street spaces between 09:00 and 17:00 hours is summarised in Tables 5 and 6.

Table 5: Average Parking Occupancy – Kempock Street (free, 1 hour)

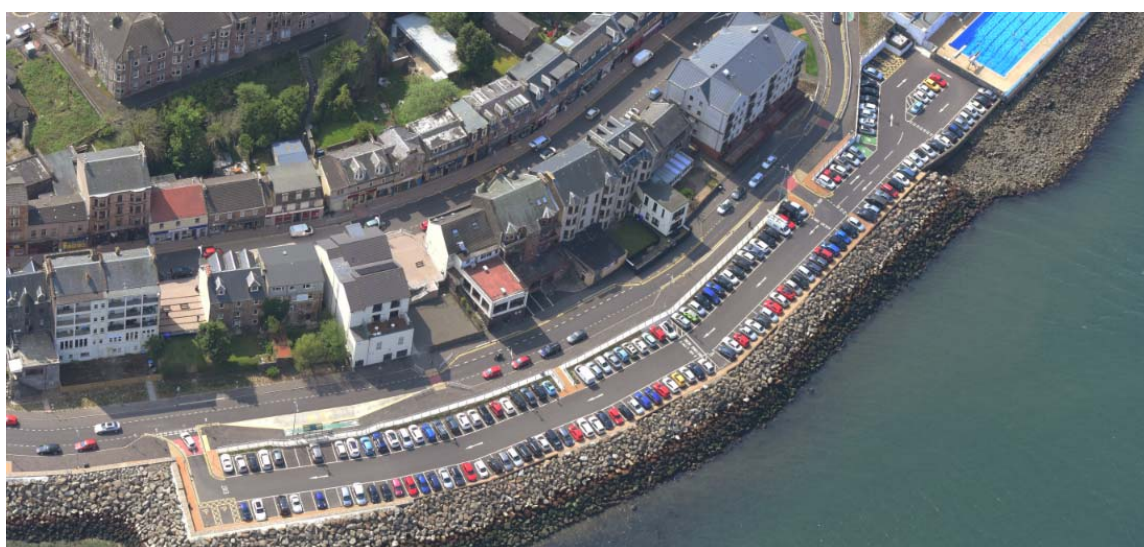
	Average Parking Occupancy (09:00-17:00 hours)		Difference
	Before Pool Opening	After Pool Opening	
Saturday	70%	73%	+3%
Tuesday	66%	73%	+7%
Thursday	74%	74%	0%

Table 6: Average Parking Occupancy – Lower Kempock Street (free, 1 hour)

	Average Parking Occupancy (09:00-17:00 hours)		Difference
	Before Pool Opening	After Pool Opening	
Saturday	22%	32%	+10%
Tuesday	25%	31%	+6%
Thursday	24%	26%	+2%

5.8 From the survey data it is evident that both the on and off street parking was used more after the Gourrock Outdoor Pool opened. The largest increase in occupancy was in Kempock Street West Car Park (3 hours).

5.9 The surveys after the Pool opened were undertaken a week after opening to allow parking behaviours to settle down. However, it was noted by the Enforcement Team that both of the Kempock Street car parks were full during the periods of good weather on the week commencing 9th May 2016. This was validated by the photograph below which was taken on Thursday 12th May by Riverside Inverclyde's Consultant.



6.0 PUBLIC CONSULTATION FINDINGS

6.1 A consultation exercise was undertaken to find out the views of residents, businesses, staff and visitors opinions about parking in Gourrock Town Centre since the parking restrictions were implemented in January (car parks) and April (introduction of discs on-street).

6.2 Paper surveys were hand delivered to all residential and business properties on Kempock Street and Lower Kempock Street. An online survey was also hosted on the Council's website and publicised through social media.

6.3 573 responses were received, including 66 consultation responses in hard copy which may be from employees of one company. All responses are included in the data analysed in the summary of the survey findings presented in Appendix 2.

Appendix 2

6.4 The majority of respondents (73%) were visitors to the town and use it for shopping, business and leisure. A further 19% work or have a business on Kempock Street and 8% of respondents are residents of Kempock Street.

6.5 Details of the responses received to the multiple choice questions are summarised in Appendix 2. There was an open question allowing respondents to give more general feedback. The responses were varied however there were key themes which came through. They are summarised in Table 7.

Table 7: Key Themes from Parking Questionnaire

Key Theme	Percentage of responses
More long stay parking required	32.9%
Provide residents' permits	11.1%
Like restrictions – easier to park	8.7%
Do away with disc or use another method	7.6%
Change short stay to nearer pool	5.0%
Parking system is confusing	5.0%

6.6 Some other issues which came from the questionnaire were:

- Pool and gym users are not using the 3 hour car park as it is further away.
- Staff are now parking in surrounding streets making it difficult for residents to park.
- The restrictions will affect tourism as people are not sure where to get discs.
- There are too many changes throughout Inverclyde we need to give things time to settle down.
- Used to find it difficult to park in Gourock, now they can park and use the local businesses.
- If all off-street parking is made long stay where will customers park?
- Provide parent and child spaces.

7.0 PROPOSED VARIATIONS

Off-Street

- 7.1 Kempock Street West car park (all day parking) is well used throughout the day from early morning until night. It provides parking for residents, staff and those wishing to spend more than 3 hours in the town centre. It is not proposed to reduce the number of unrestricted parking spaces in this car park.
- 7.2 The 3 hour car park (Kempock Street East) is used more following the opening of the Gourock Outdoor Pool, however, it is underutilised. During the survey day when the weather was warm the car park experienced a large increase in parking. As the car park is generally underutilised it is proposed to reduce the number of spaces reserved for short stay. It is also proposed that the Kempock Street East and Kempock Street West car parks be 'switched around'.
- 7.3 The proposed arrangements for these car parks would mean that Kempock Street West (nearer the Pool) becomes the short stay car park with 41 spaces plus 2 disabled parking places and 2 electric vehicle bays (45 spaces in total). It is proposed that Kempock Street East (nearer the Station) becomes the long stay car park with 120 spaces plus 2 disabled spaces and 1 motorcycle space (123 spaces in total).
- 7.4 It should be noted that, although there is an increase to the number of all-day parking spaces, these could be used by people working in the town or commuting to Glasgow. The latter is particularly true as the long stay parking will be closer to the station. This could result in fewer people using the Station Road North and South car parks.
- 7.5 With regard to the Station Road North and South car parks no changes are proposed to these car parks as they offer parking for commuters at a cheaper cost than the Network Rail car parks, although it is noted that rail passengers can get a refund for their parking ticket when they purchase a train ticket.
- 7.6 Members should be aware that officers considered whether it was appropriate or not to look at a TRO which introduced seasonal restrictions i.e. during the summer periods only. This is not proposed as there remains significant demand for short stay parking as demonstrated by the usage of the short stay car park before the Pool opened.

On-Street

- 7.7 It is evident from the parking surveys that the on-street parking on Kempock Street is well used with a good turnover of spaces. This gives people access to parking to use the area for short periods to do banking, visit shops and dentists, etc.
- 7.8 Lower Kempock Street has the same 1 hour on-street parking as Kempock Street and has good access to Kempock Street at the start and end of the street and at 3 locations in between. However, it is not used as much as officers would expect. The maximum occupancy recorded was 39%.
- 7.9 It is therefore recommended that the 1 hour restriction on Kempock Street remain and the restriction on Lower Kempock Street be increased to 3 hours. This will make these spaces more attractive to people coming in to shop or visit.
- 7.10 Officers met with Ward Members who advised they were supportive of the proposals and acknowledged individual members of the community would have further opportunity to make representation on any revised TROs promoted through the normal statutory consultation process.

8.0 IMPLICATIONS

Finance

- 8.1 There will be a cost for amending the signs and road markings in the car parks as well as changing the signs on Lower Kempock Street. These costs could be met from the remaining balance of the Parking Strategy Earmarked Reserve.

One off Costs

Cost Centre	Budget Heading	Budget Years	Proposed Spend this Report	Virement From	Other Comments
00649-999-60005	Parking Strategy Earmarked Reserve	16/17	£4,000		New signs and lines

Legal

- 8.2 Variations to two separate TROs, namely “The Inverclyde Council (Various Roads) (Gourock, Inverkip & Wemyss Bay) (Waiting Restrictions) Order 2013” and “The Inverclyde Council (Off-Street Parking Places) Order 2013”, will both be promoted in accordance with the terms of the Local Authorities’ Traffic Order (Procedure) (Scotland) Regulations 1999.
- 8.3 The Committee is asked to note that, if approved, the Orders may not be implemented until the making of the Orders has been advertised to allow any persons who so wish a period of six weeks to question the validity of the Orders in terms of the Road Traffic Regulation Act 1984.

Human Resources

- 8.4 There are no HR implications arising from this report.

Equalities

- 8.5 There are no equality issues arising from this report.

Repopulation

- 8.6 There are no repopulation implications arising from this report.

9.0 CONSULTATIONS

9.1 Consultation has been undertaken with Ward Members regarding the approach to be taken.

A public consultation exercise was undertaken to seek the views of residents, staff and visitors of Gourrock.

The Head of Legal and Property Services, Head of Safer & Inclusive Communities and the Chief Financial Officer have been consulted on this report.

10.0 LIST OF BACKGROUND PAPERS

10.1 None

Comparison of Saturday Data

Kempock Street West
All Day Car Park

Regular	80
Disabled	2
Electric Vehicle	2
Motorcycle	1
Total Spaces	85

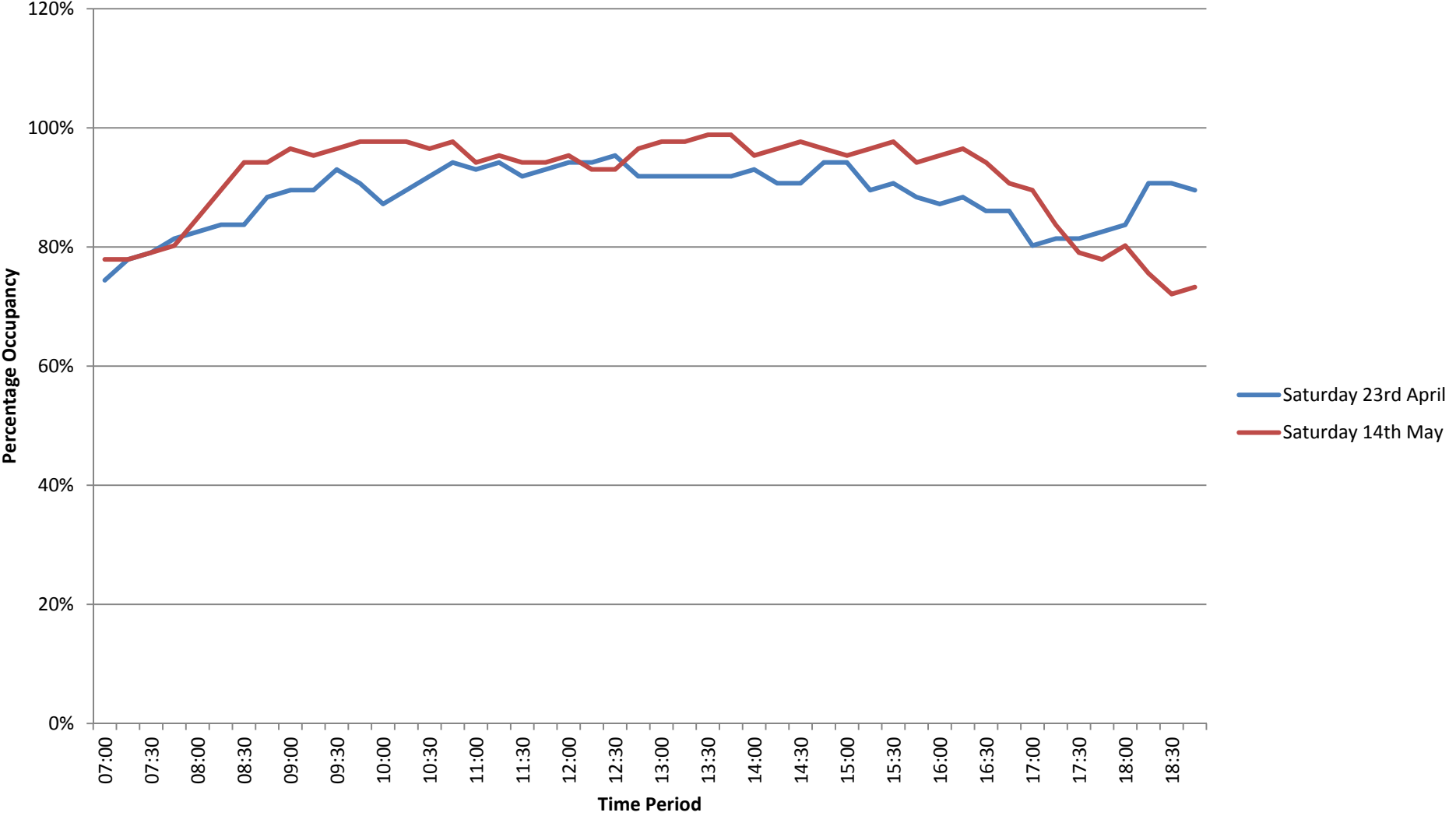
	Saturday 23 rd April	Saturday 14 th May	Difference after pool opening
Average use 9am-5pm	91%	96%	+5%

	Saturday 23 rd April	Saturday 14 th May	Difference after pool opening
Max number of vehicles parked	82	85	+3

Duration of Stay	Saturday 23 rd April 2016		Saturday 14 th May 2016		Difference after pool opening
	Parking Occurrences	%age of Parking Incidences	Parking Occurrences	%age of Parking Incidences	
		266		235	
0-3 hours	169	64%	140	60%	-29
3-7 hours	56	21%	41	17%	-15
Greater than 7 hours	41	15%	54	23%	+13

Percentage Occupancy	Occupancy (Hours)		Difference after pool opening
	Saturday 23 rd April	Saturday 14 th May	
0-10%	0	0	0
11-20%	0	0	0
21-30%	0	0	0
31-40%	0	0	0
41-50%	0	0	0
51-60%	0	0	0
61-70%	0	0	0
71-80%	0.75	2.5	+1.75
81-90%	5	1	-4
91-100%	6.25	8.5	+2.25

Comparison of Occupancy - All Day Car Park



Kempock Street East
3 hour Car Park

Regular	81
Disabled	2
Total Spaces	83

	Saturday 23 rd April	Saturday 14 th May	Difference after pool opening
Average use 9am-5pm	45%	71%	+26%

	Saturday 23 rd April	Saturday 14 th May	Difference after pool opening
Max number of vehicles parked	51	79	+28

Duration of Stay	Saturday 23 rd April 2016		Saturday 14 th May 2016		Difference after pool opening
	Parking Occurrences	%age of Parking Incidences	Parking Occurrences	%age of Parking Incidences	
		250		338	
0-1 hours	123	49%	122	36%	-1
1-2 hours	79	32%	131	39%	+52
2-3 hours	32	13%	65	19%	+33
Greater than 3 hours	16	6%	20	6%	+4

Percentage Occupancy	Occupancy (Hours)		Difference after pool opening
	Saturday 23 rd April	Saturday 14 th May	
0-10%	0	0.25	+0.25
11-20%	3.75	1.75	-2
21-30%	1.5	1.5	0
31-40%	1	1	0
41-50%	2.25	0.5	-1.75
51-60%	3	1.25	-1.75
61-70%	0.5	1.75	+1.25
71-80%	0	1	+1
81-90%	0	1.75	+1.75
91-100%	0	1.25	+1.25

Comparison of Occupancy - 3 Hour Car Park



Station Road North

Pay & Display (£1 per day)

24 spaces

	Saturday 23 rd April	Saturday 14 th May	Difference after pool opening
Average use 9am-5pm	28%	40%	+12%

	Saturday 23 rd April	Saturday 14 th May	Difference after pool opening
Max number of vehicles parked	13	15	+2

Duration of Stay	Saturday 23 rd April 2016		Saturday 14 th May 2016		Difference after pool opening
	Parking Occurrences	%age of Parking Incidences	Parking Occurrences	%age of Parking Incidences	
		29		26	
0-3 hours	16	55%	15	58%	-1
3-7 hours	13	45%	6	23%	-7
Greater than 7 hours	0	0%	5	19%	+5

Percentage Occupancy	Occupancy (Hours)		Difference after pool opening
	Saturday 23 rd April	Saturday 14 th May	
0-10%	2.25	2.25	0
11-20%	3.25	2.75	-0.5
21-30%	1.25	1.5	+0.25
31-40%	2.75	1.25	-1.5
41-50%	2.25	1.75	-0.5
51-60%	0.25	2	+1.75
61-70%	0	0.5	+0.5
71-80%	0	0	0
81-90%	0	0	0
91-100%	0	0	0

Comparison of Occupancy - Station Road North Car Park



Station Road South

Pay & Display (£1 per day)

12 spaces

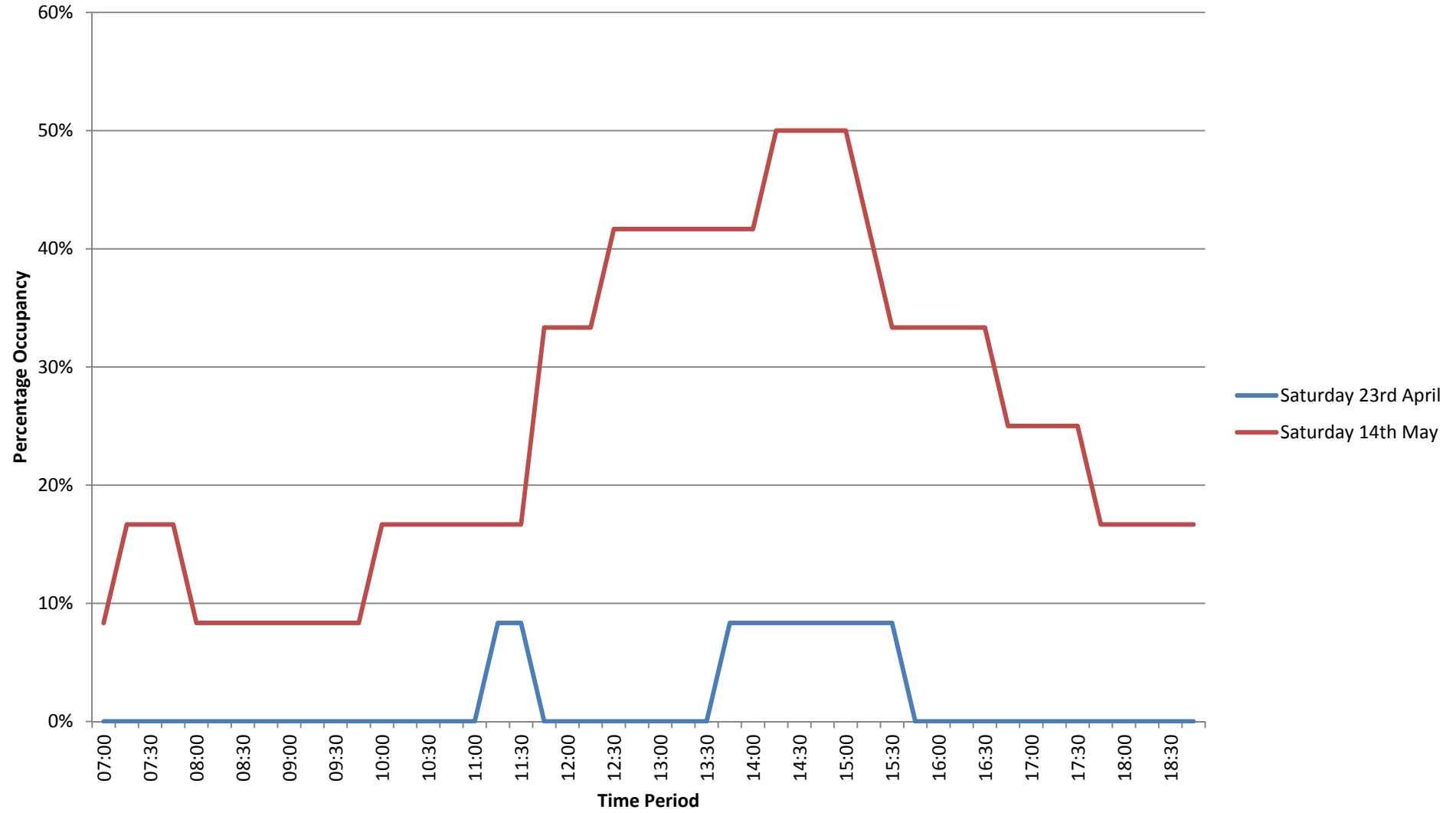
	Saturday 23rd April	Saturday 14th May	Difference after pool opening
Average use 9am-5pm	3%	30%	+27%

	Saturday 23rd April	Saturday 14th May	Difference after pool opening
Max number of vehicles parked	1	6	+5

Duration of Stay	Saturday 23rd April 2016		Saturday 14th May 2016		Difference after pool opening
	Parking Occurrences	%age of Parking Incidences	Parking Occurrences	%age of Parking Incidences	
		2		8	
0-3 hours	2	100%	1	12%	-1
3-7 hours	0	0%	7	88%	+7
Greater than 7 hours	0	0%	0	0%	0

Percentage Occupancy	Occupancy (Hours)		Difference after pool opening
	Saturday 23rd April	Saturday 14th May	
0-10%	12	2.25	-9.75
11-20%	0	2.75	+2.75
21-30%	0	1.5	+1.5
31-40%	0	1.25	+1.25
41-50%	0	1.75	+1.75
51-60%	0	2	+2
61-70%	0	0.5	+0.5
71-80%	0	0	0
81-90%	0	0	0
91-100%	0	0	0

Comparison of Occupancy - Station Road South Car Park



Kempock Street – On-Street

1 hour

1 hour	24
Disabled	4
Loading/ 1 hour	3
Total Spaces	31

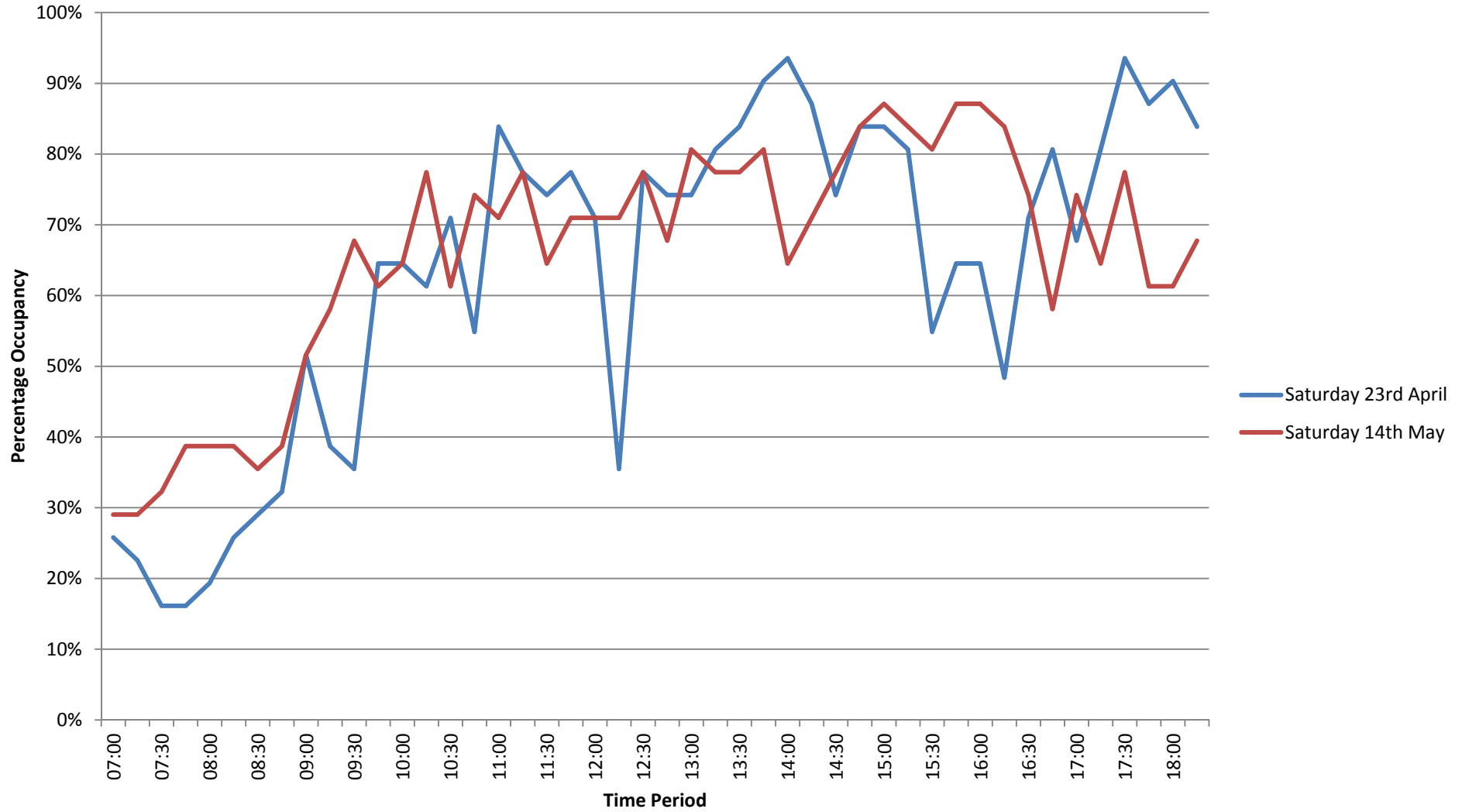
It should be noted that these spaces are assuming that vehicles park efficiently.

	Saturday 23rd April	Saturday 14th May	Difference after pool opening
Average use 9am-5pm	70%	73%	+3%

	Saturday 23rd April	Saturday 14th May	Difference after pool opening
Max number of vehicles parked	29	27	-2

Duration of Stay	Saturday 23rd April 2016		Saturday 14th May 2016		Difference after pool opening
	Parking Occurrences	%age of Parking Incidences	Parking Occurrences	%age of Parking Incidences	
		337		321	
0-1 hours	291	86%	277	86%	-14
1-2 hours	36	11%	27	8%	-9
2-3 hours	7	2%	7	2%	0
Greater than 3 hours	4	1%	10	3%	+6

Comparison of Occupancy - Kempock Street (On-Street)



Lower Kempock Street – On-Street

1 hour

1 hour	35
Disabled	2
Total Spaces	37

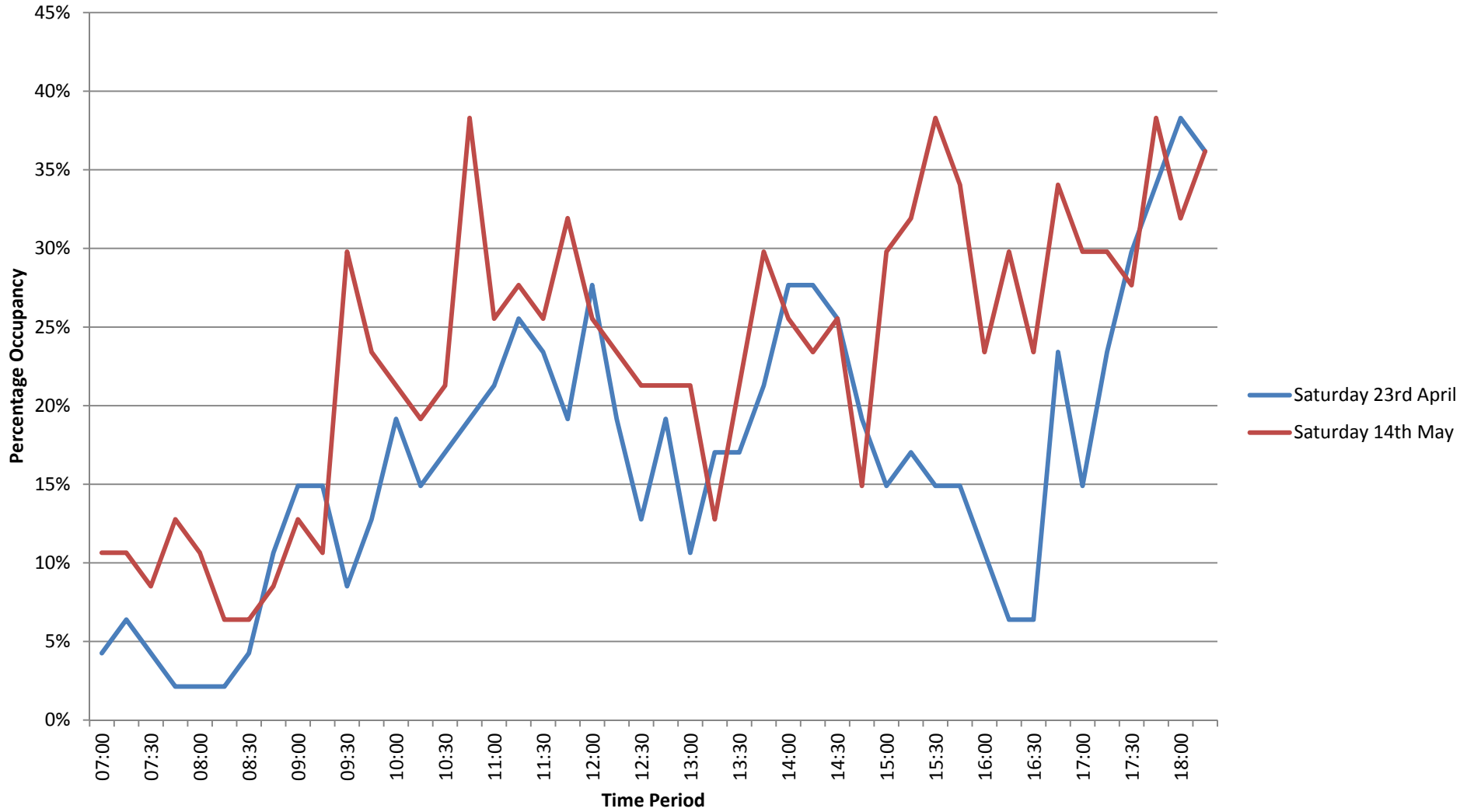
It should be noted that these spaces are assuming that vehicles park efficiently.

	Saturday 23 rd April	Saturday 14 th May	Difference after pool opening
Average use 9am-5pm	22%	32%	+10%

	Saturday 23 rd April	Saturday 14 th May	Difference after pool opening
Max number of vehicles parked	18	19	+1

Duration of Stay	Saturday 23 rd April 2016		Saturday 14 th May 2016		Difference after pool opening
	Parking Occurrences	%age of Parking Incidences	Parking Occurrences	%age of Parking Incidences	
		164		226	
0-1 hours	148	90%	205	91%	+57
1-2 hours	11	7%	12	5%	+1
2-3 hours	3	2%	4	2%	+1
Greater than 3 hours	2	1%	5	2%	+3

Comparison of Occupancy - Lower Kempock Street (On-Street)



Comparison of Tuesday Data

Kempock Street West
All Day Car Park

Regular	80
Disabled	2
Electric Vehicle	2
Motorcycle	1
Total Spaces	85

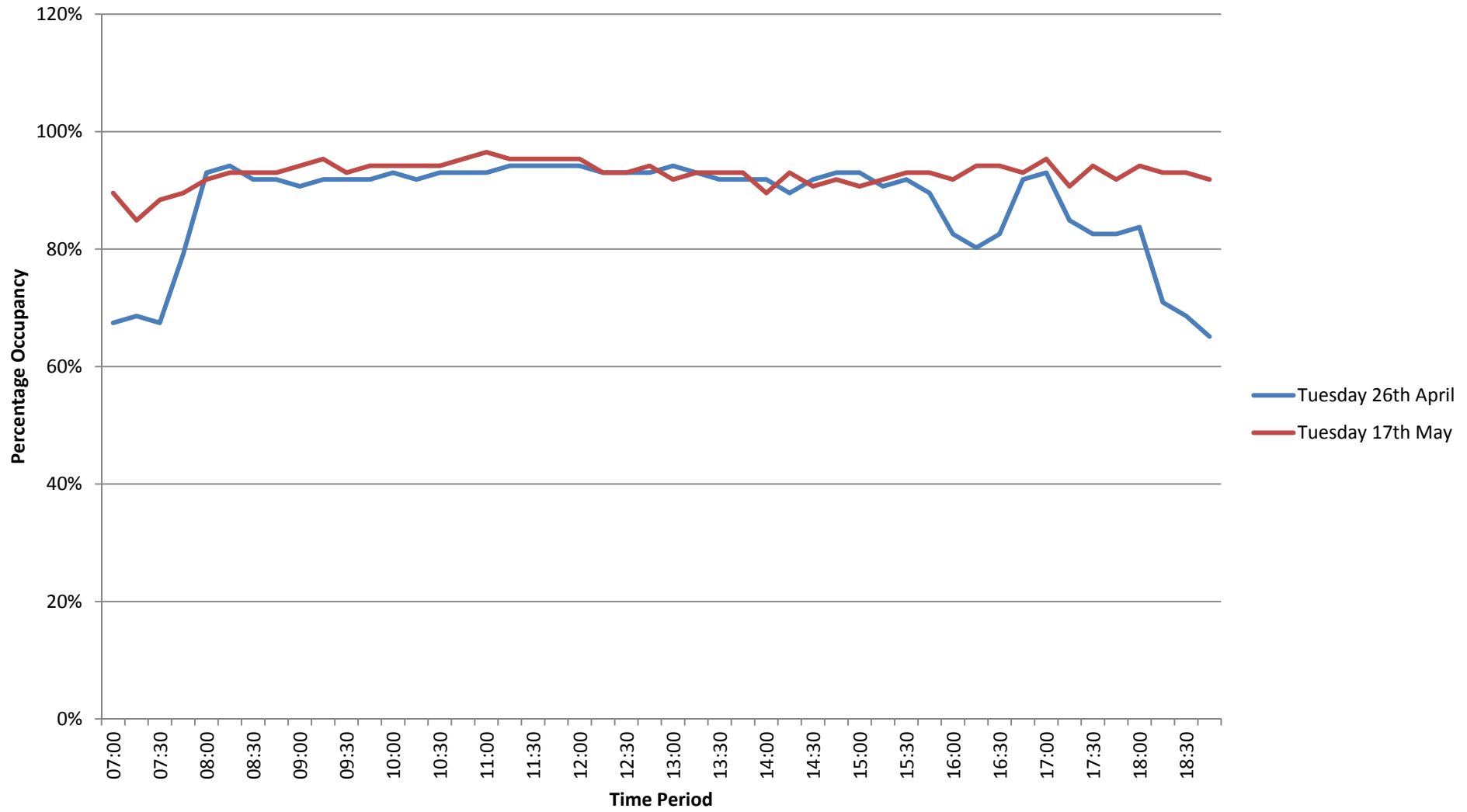
	Tuesday 26 th April	Tuesday 17 th May	Difference after pool opening
Average use 9am-5pm	91%	93%	+2%

	Tuesday 26 th April	Tuesday 17 th May	Difference after pool opening
Max number of vehicles parked	81	83	+2

Duration of Stay	Tuesday 26 th April		Tuesday 17 th May		Difference after pool opening
	Parking Occurrences	%age of Parking Incidences	Parking Occurrences	%age of Parking Incidences	
		241		238	
0-3 hours	154	64%	151	63%	-3
3-7 hours	38	16%	30	13%	-8
Greater than 7 hours	49	20%	57	24%	+8

Percentage Occupancy	Occupancy (Hours)		Difference after pool opening
	Tuesday 26 th April	Tuesday 17 th May	
0-10%	0	0	0
11-20%	0	0	0
21-30%	0	0	0
31-40%	0	0	0
41-50%	0	0	0
51-60%	0	0	0
61-70%	1.25	0	-1.25
71-80%	0.5	0	-0.5
81-90%	2.25	1	-1.25
91-100%	8	11	+3

Comparison of Occupancy - All Day Car Park



Kempock Street East
3 hour Car Park

Regular	81
Disabled	2
Total Spaces	83

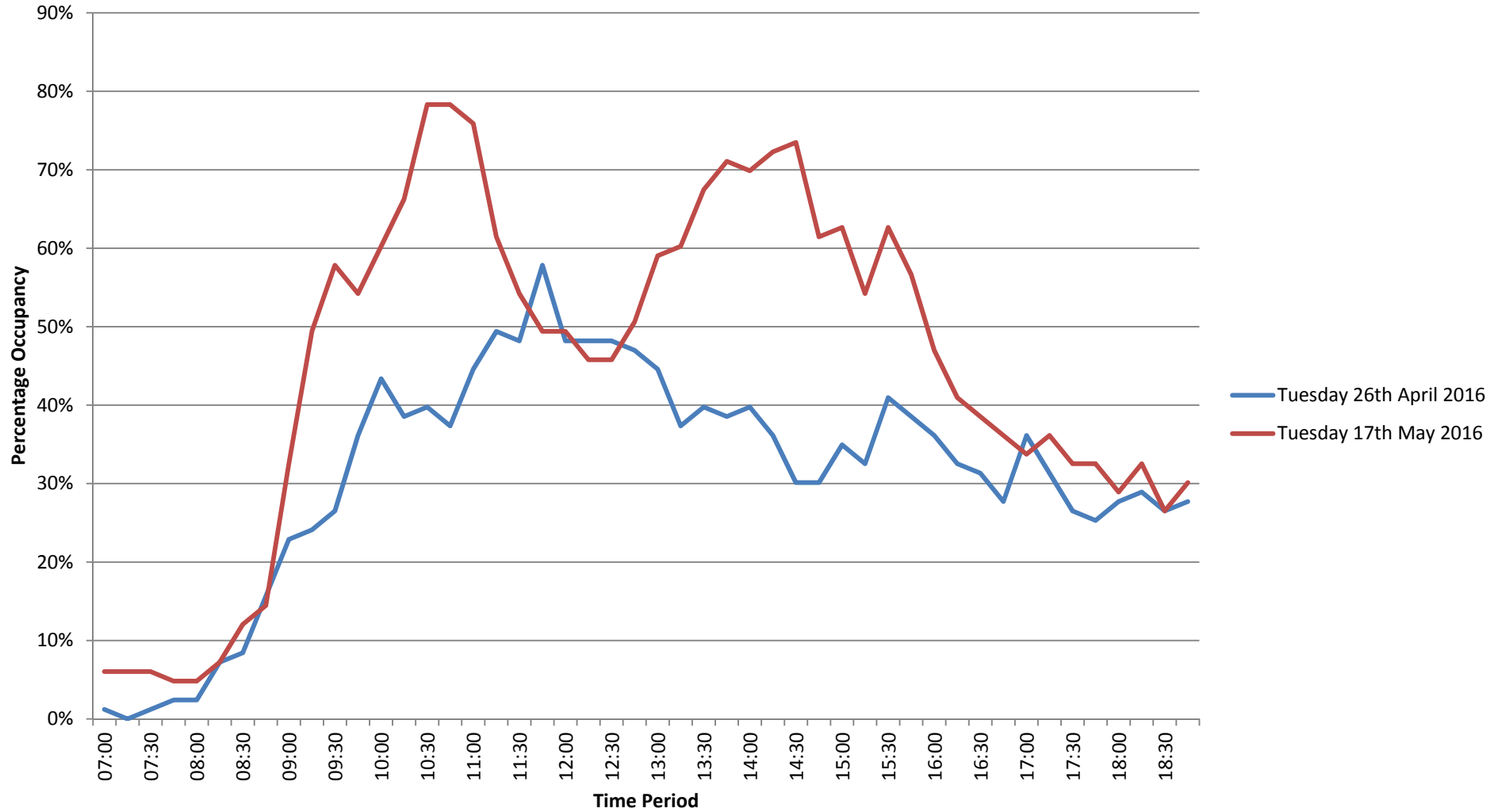
	Tuesday 26 th April	Tuesday 17 th May	Difference after pool opening
Average use 9am-5pm	38%	58%	+20%

	Tuesday 26 th April	Tuesday 17 th May	Difference after pool opening
Max number of vehicles parked	48	65	+17

Duration of Stay	Tuesday 26 th April		Tuesday 17 th May		Difference after pool opening
	Parking Occurrences	%age of Parking Incidences	Parking Occurrences	%age of Parking Incidences	
		221		298	
0-1 hours	99	45%	126	42%	+27
1-2 hours	78	35%	115	39%	+37
2-3 hours	38	17%	45	15%	+7
Greater than 3 hours	6	3%	12	4%	+6

Percentage Occupancy	Occupancy (Hours)		Difference after pool opening
	Tuesday 26 th April	Tuesday 17 th May	
0-10%	1.75	1.5	-0.25
11-20%	0.25	0.5	+0.25
21-30%	3	0.75	-2.25
31-40%	4.25	2	-2.25
41-50%	2.5	1.75	-0.75
51-60%	0.25	2.25	+2
61-70%	0	1.75	-0.75
71-80%	0	1.5	+1.5
81-90%	0	0	0
91-100%	0	0	0

Comparison of Occupancy - 3 Hour Car Park



Station Road North

Pay & Display (£1 per day)

24 spaces

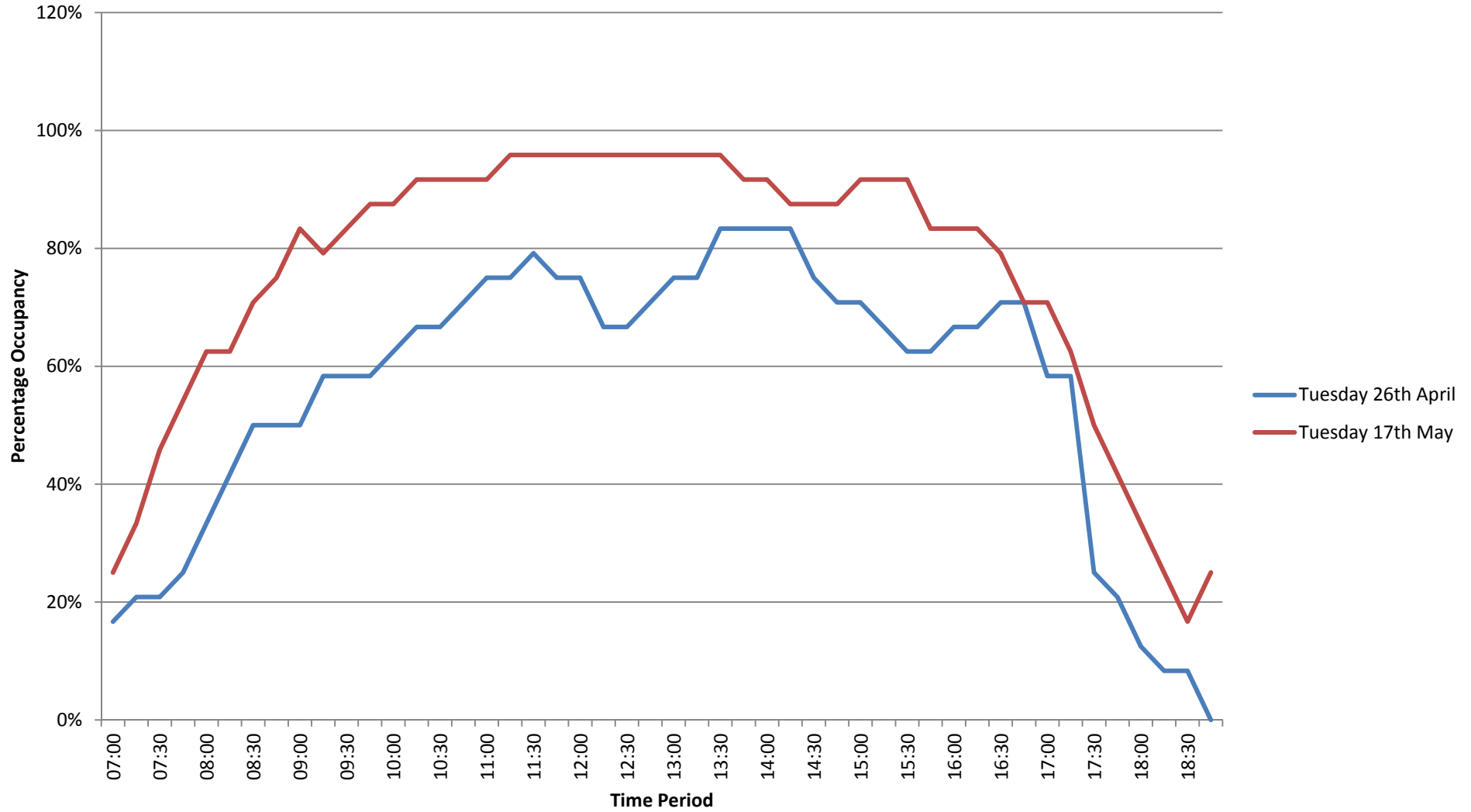
	Tuesday 26 th April	Tuesday 17 th May	Difference after pool opening
Average use 9am-5pm	70%	90%	+20%

	Tuesday 26 th April	Tuesday 17 th May	Difference after pool opening
Max number of vehicles parked	20	23	+3

Duration of Stay	Tuesday 26 th April		Tuesday 17 th May		Difference after pool opening
	Parking Occurrences	%age of Parking Incidences	Parking Occurrences	%age of Parking Incidences	
		34		28	
0-3 hours	15	44%	4	14%	-11
3-7 hours	8	24%	4	14%	-4
Greater than 7 hours	11	32%	20	71%	+9

Percentage Occupancy	Occupancy (Hours)		Difference after pool opening
	Tuesday 26 th April	Tuesday 17 th May	
0-10%	0.75	0	-0.75
11-20%	0.5	0.25	-0.25
21-30%	1.25	0.75	-0.5
31-40%	0.25	0.5	+0.25
41-50%	1	0.75	-0.25
51-60%	1.25	0.25	-1
61-70%	2.5	0.75	-1.75
71-80%	3.5	1.5	-2
81-90%	1	2.5	+1.5
91-100%	0	4.75	+4.75

Comparison of Occupancy - Station Road North Car Park



Station Road South

Pay & Display (£1 per day)

12 spaces

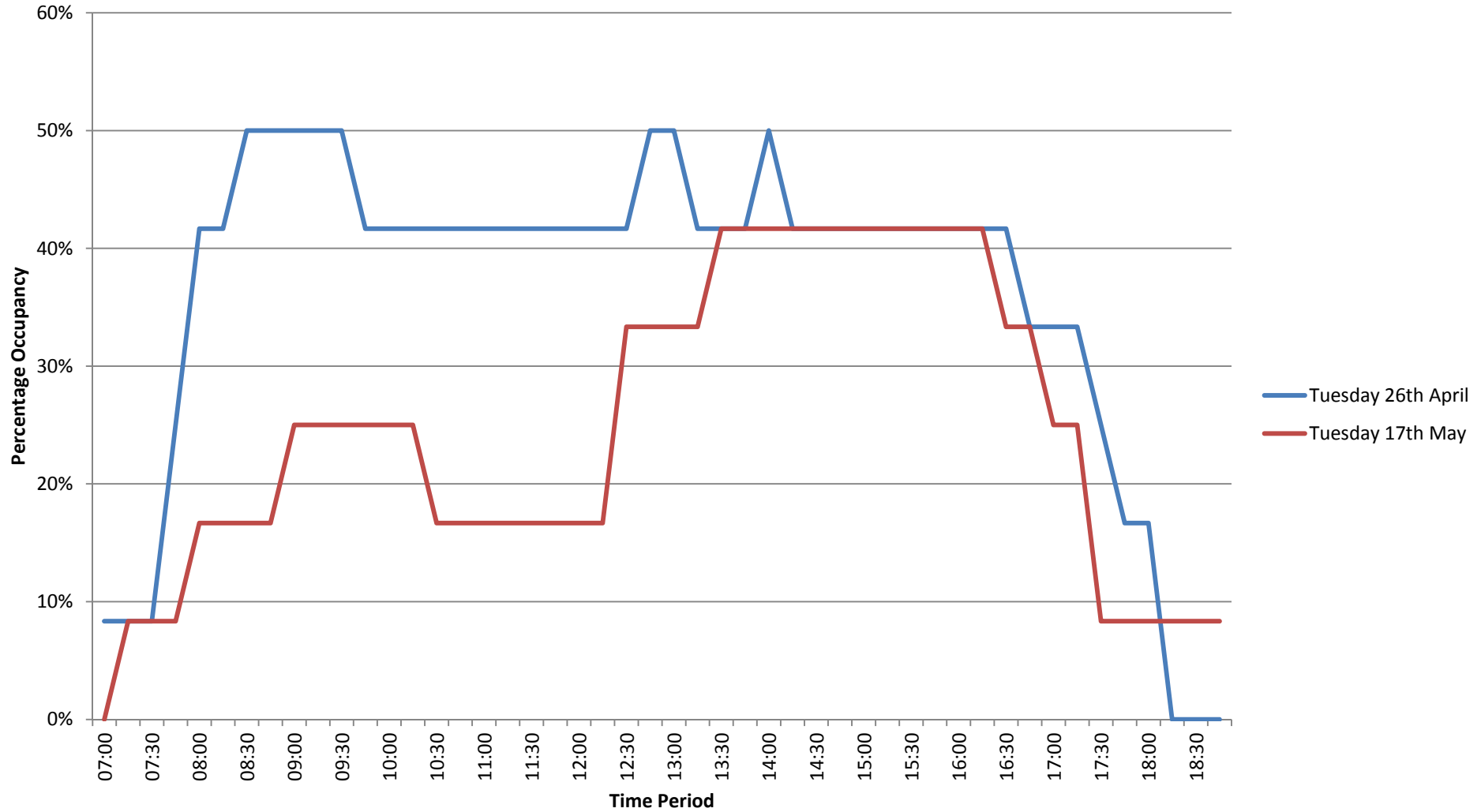
	Tuesday 26 th April	Tuesday 17 th May	Difference after pool opening
Average use 9am-5pm	43%	31%	-12%

	Tuesday 26 th April	Tuesday 17 th May	Difference after pool opening
Max number of vehicles parked	6	5	+1

Duration of Stay	Tuesday 26 th April		Tuesday 17 th May		Difference after pool opening
	Parking Occurrences	%age of Parking Incidences	Parking Occurrences	%age of Parking Incidences	
		9		6	
0-3 hours	4	44%	0	0%	-4
3-7 hours	1	11%	4	67%	+3
Greater than 7 hours	4	44%	2	33%	-2

Percentage Occupancy	Occupancy (Hours)		Difference after pool opening
	Tuesday 26 th April	Tuesday 17 th May	
0-10%	1.5	2.5	+1
11-20%	0.5	3	+2.5
21-30%	0.5	2	+1.5
31-40%	0.75	1.5	+0.75
41-50%	8.75	3	-5.75
51-60%	0	0	0
61-70%	0	0	0
71-80%	0	0	0
81-90%	0	0	0
91-100%	0	0	0

Comparison of Occupancy - Station Road South Car Park



Kempock Street – On-Street
1 hour

1 hour	24
Disabled	4
Loading/ 1 hour	3
Total Spaces	31

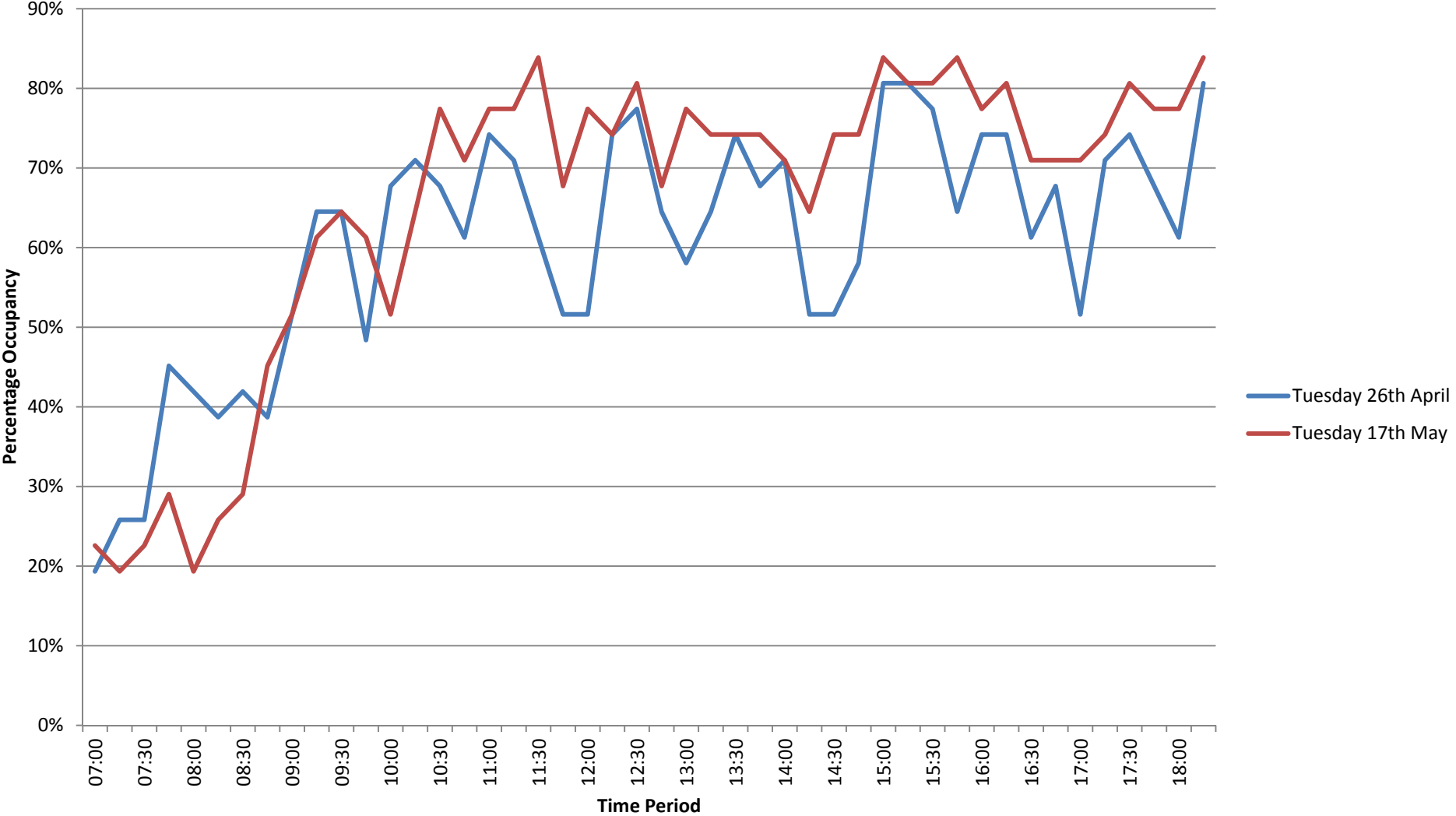
It should be noted that these spaces are assuming that vehicles park efficiently.

	Tuesday 26 th April	Tuesday 17 th May	Difference after pool opening
Average use 9am-5pm	66%	73%	+7%

	Tuesday 26 th April	Tuesday 17 th May	Difference after pool opening
Max number of vehicles parked	25	26	+1

Duration of Stay	Tuesday 26 th April		Tuesday 17 th May		Difference after pool opening
	Parking Occurrences	%age of Parking Incidences	Parking Occurrences	%age of Parking Incidences	
		333		358	
0-1 hours	293	88%	312	87%	+19
1-2 hours	31	9%	32	9%	+1
2-3 hours	4	1%	6	2%	+2
Greater than 3 hours	5	2%	8	2%	+3

Comparison of Occupancy - Kempock Street (On-Street)



Lower Kempock Street – On-Street

1 hour

1 hour	35
Disabled	2
Total Spaces	37

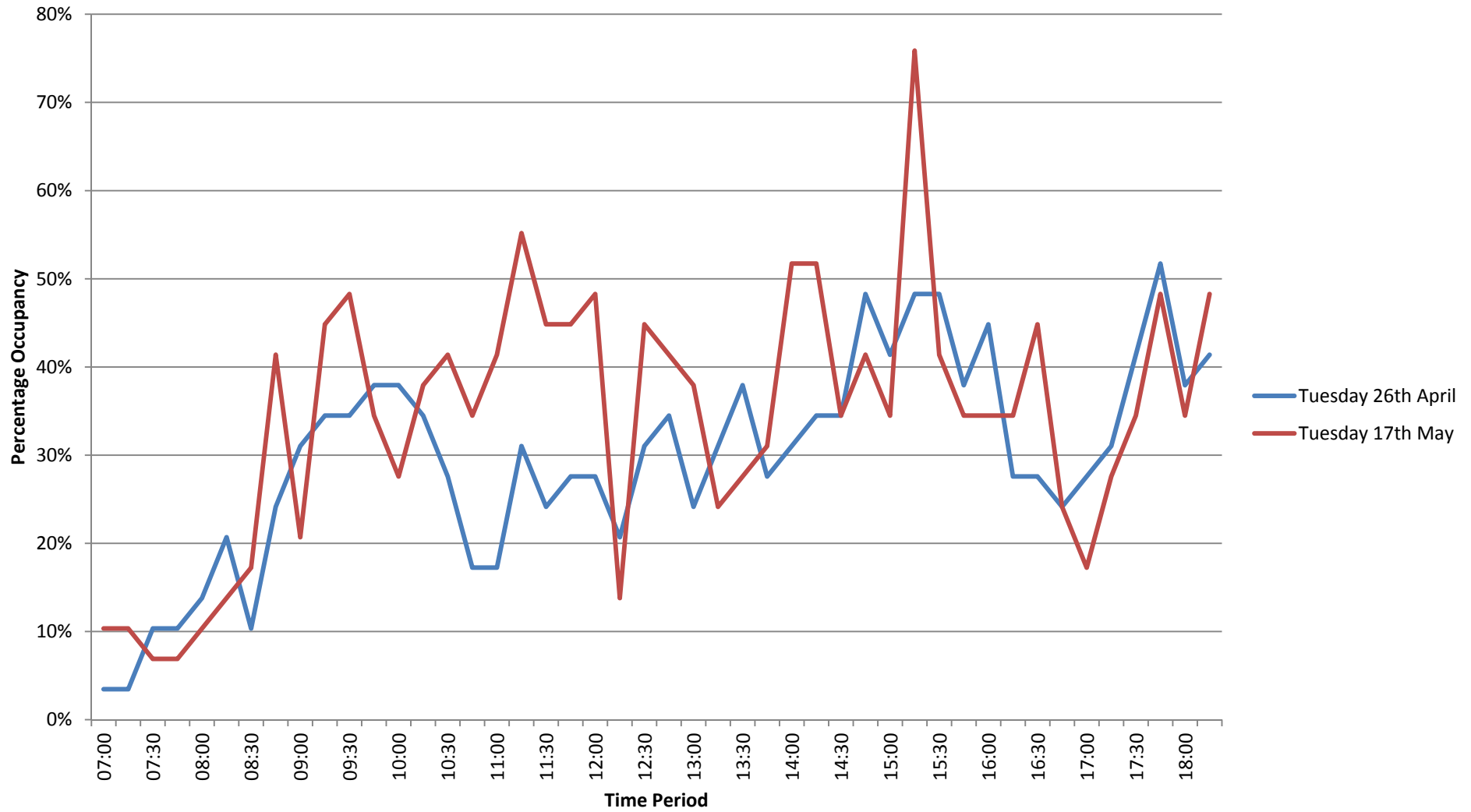
It should be noted that these spaces are assuming that vehicles park efficiently.

	Tuesday 26 th April	Tuesday 17 th May	Difference after pool opening
Average use 9am-5pm	25%	31%	+7%

	Tuesday 26 th April	Tuesday 17 th May	Difference after pool opening
Max number of vehicles parked	17	22	+5

Duration of Stay	Tuesday 26 th April		Tuesday 17 th May		Difference after pool opening
	Parking Occurrences	%age of Parking Incidences	Parking Occurrences	%age of Parking Incidences	
		159		207	
0-1 hours	140	88%	186	90%	+46
1-2 hours	15	9%	19	9%	+4
2-3 hours	2	1%	1	0.5%	-1
Greater than 3 hours	2	1%	1	0.5%	-1

Comparison of Occupancy - Lower Kempock Street (On-Street)



Comparison of Thursday Data

Kempock Street West
All Day Car Park

Regular	80
Disabled	2
Electric Vehicle	2
Motorcycle	1
Total Spaces	85

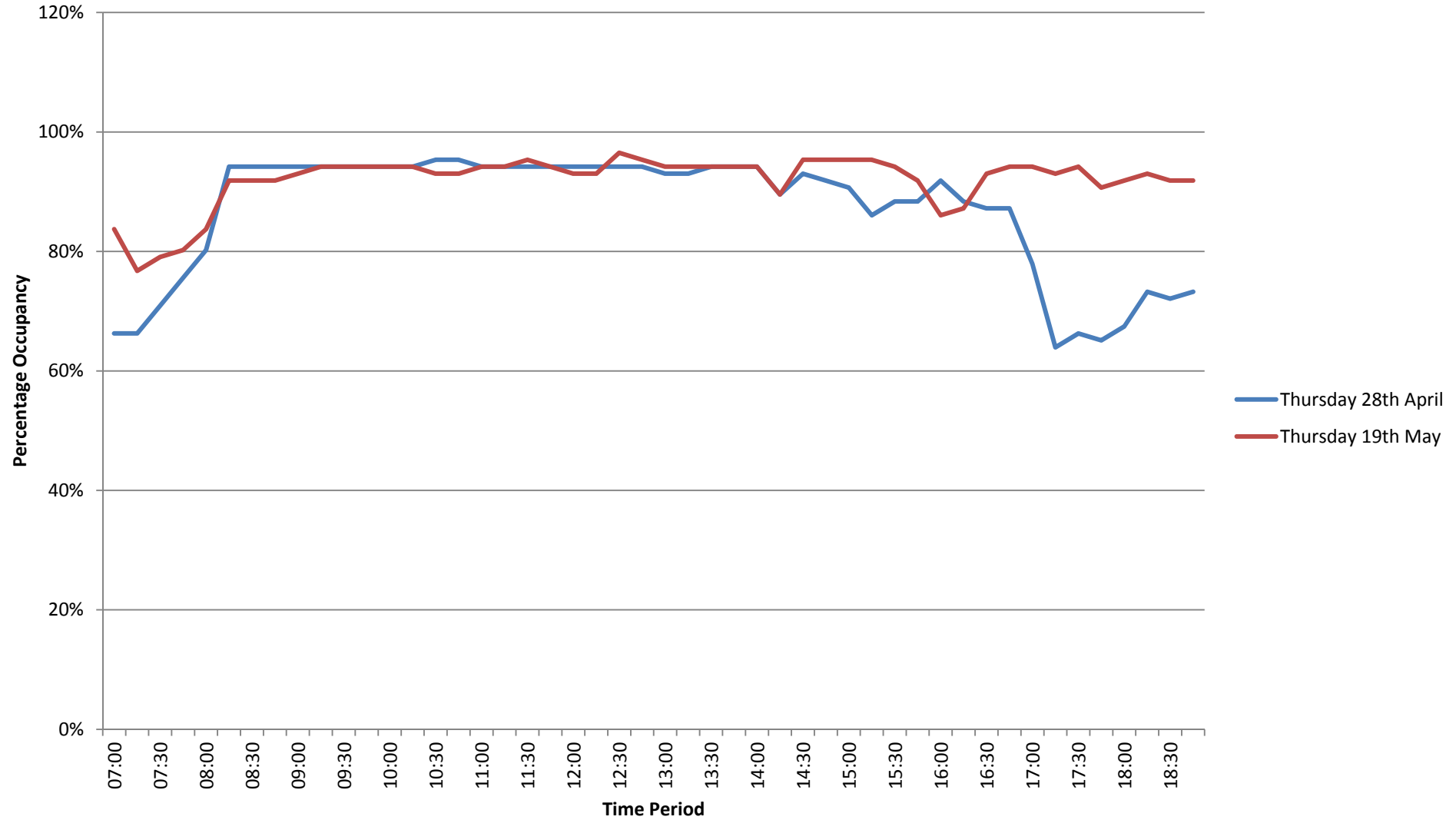
	Thursday 28 th April	Thursday 19 th May	Difference after pool opening
Average use 9am-5pm	93%	94%	+1%

	Thursday 28 th April	Thursday 19 th May	Difference after pool opening
Max number of vehicles parked	82	83	+1

Duration of Stay	Thursday 28 th April		Thursday 19 th May		Difference after pool opening
	Parking Occurrences	%age of Parking Incidences	Parking Occurrences	%age of Parking Incidences	
		188		230	
0-3 hours	94	50%	133	53%	+39
3-7 hours	38	20%	44	19%	+6
Greater than 7 hours	56	30%	53	23%	-3

Percentage Occupancy	Occupancy (Hours)		Difference after pool opening
	Thursday 28 th April	Thursday 19 th May	
0-10%	0	0	0
11-20%	0	0	0
21-30%	0	0	0
31-40%	0	0	0
41-50%	0	0	0
51-60%	0	0	0
61-70%	1.5	0	-1.5
71-80%	1.75	0.75	-0.75
81-90%	1.75	1.25	-0.5
91-100%	7	10	+3

Comparison of Occupancy - All Day Car Park



Kempock Street East
3 hour Car Park

Regular	81
Disabled	2
Total Spaces	83

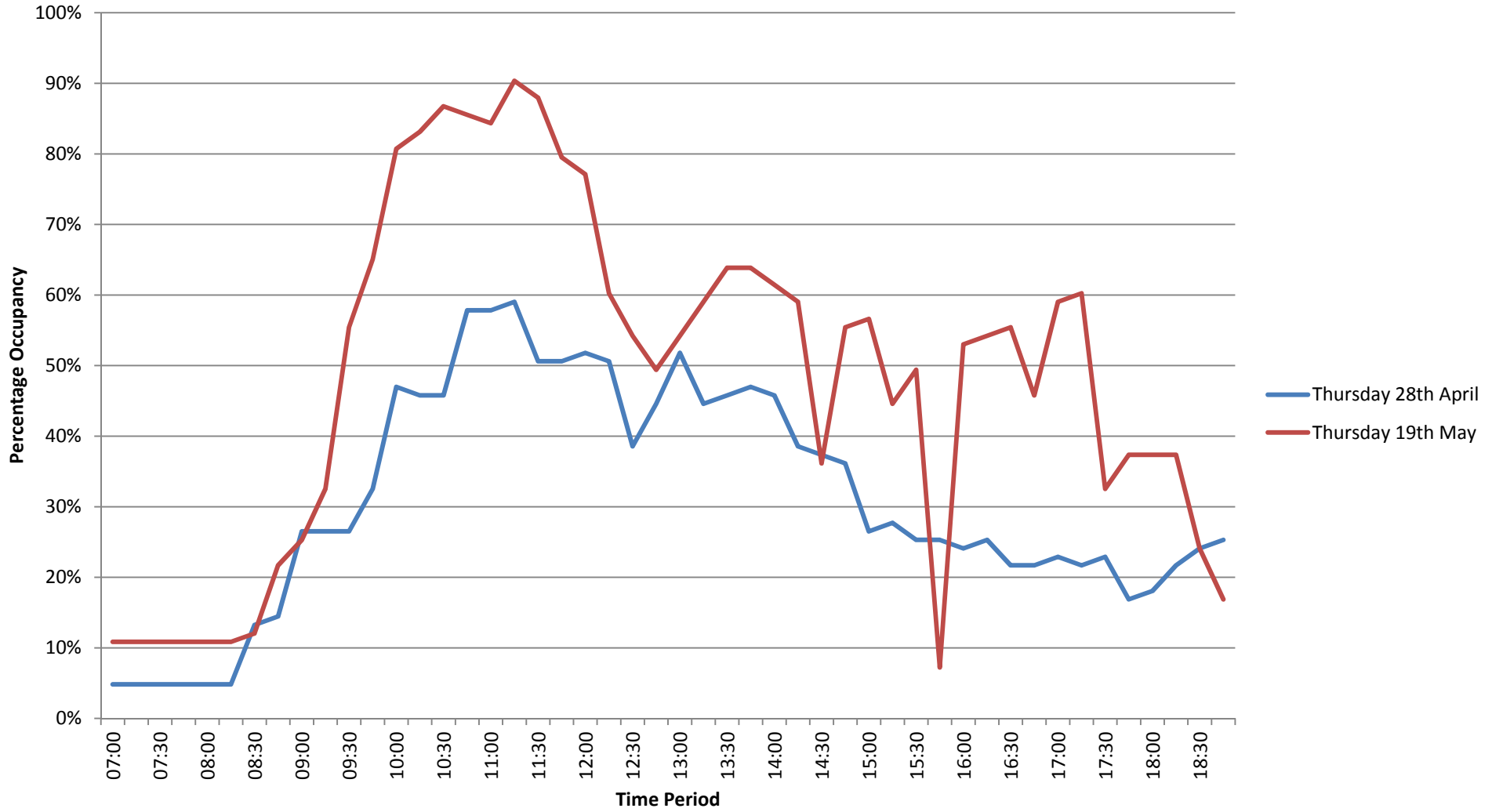
	Thursday 28 th April	Thursday 19 th May	Difference after pool opening
Average use 9am-5pm	39%	62%	+23%

	Thursday 28 th April	Thursday 19 th May	Difference after pool opening
Max number of vehicles parked	49	75	+26

Duration of Stay	Thursday 28 th April		Thursday 19 th May		Difference after pool opening
	Parking Occurrences	%age of Parking Incidences	Parking Occurrences	%age of Parking Incidences	
		222		347	
0-1 hours	112	50%	171	47%	+59
1-2 hours	69	31%	109	31%	+40
2-3 hours	26	12%	55	16%	+29
Greater than 3 hours	15	7%	12	3%	-3

Percentage Occupancy	Occupancy (Hours)		Difference after pool opening
	Thursday 28 th April	Thursday 19 th May	
0-10%	1.5	0	-1.5
11-20%	1	2	+1
21-30%	4.25	0.75	-3.5
31-40%	1.25	2	+0.75
41-50%	2	0.5	-1.5
51-60%	2	3.5	+1.5
61-70%	0	1	+1
71-80%	0	0.5	+0.5
81-90%	0	1.75	+1.75
91-100%	0	0	0

Comparison of Occupancy - 3 Hour Car Park



Station Road North

Pay & Display (£1 per day)

24 spaces

	Thursday 28 th April	Thursday 19 th May	Difference after pool opening
Average use 9am-5pm	81%	71%	-10%

	Thursday 28 th April	Thursday 19 th May	Difference after pool opening
Max number of vehicles parked	22	19	-3

Duration of Stay	Thursday 28 th April		Thursday 19 th May		Difference after pool opening
	Parking Occurrences	%age of Parking Incidences	Parking Occurrences	%age of Parking Incidences	
		31		22	
0-3 hours	5	16%	3	14%	-2
3-7 hours	13	42%	6	27%	-7
Greater than 7 hours	13	42%	13	59%	0

Percentage Occupancy	Occupancy (Hours)		Difference after pool opening
	Thursday 28 th April	Thursday 19 th May	
0-10%	0.25	0.25	0
11-20%	0.75	1	+0.25
21-30%	1.25	1.75	+0.5
31-40%	0.25	0.25	0
41-50%	0.25	1.25	+1
51-60%	0.5	0.5	0
61-70%	0	2.5	+2.5
71-80%	5.75	4.5	-1.25
81-90%	2.5	0	-2.5
91-100%	0.5	0	-0.5

Comparison of Occupancy - Station Road North Car Park



Station Road South

Pay & Display (£1 per day)

12 spaces

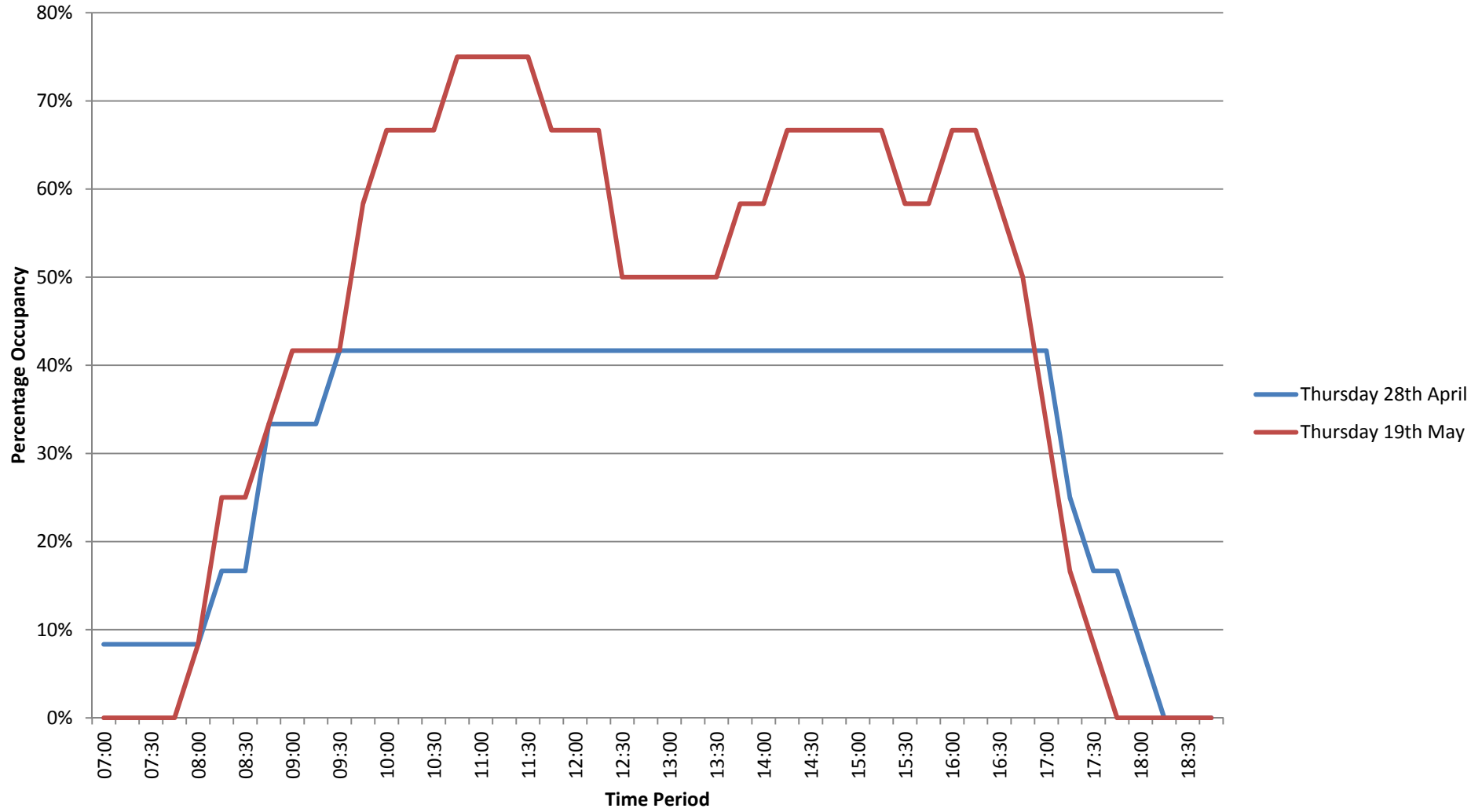
	Thursday 28 th April	Thursday 19 th May	Difference after pool opening
Average use 9am-5pm	41%	61%	+20%

	Thursday 28 th April	Thursday 19 th May	Difference after pool opening
Max number of vehicles parked	5	9	+4

Duration of Stay	Thursday 28 th April		Thursday 19 th May		Difference after pool opening
	Parking Occurrences	%age of Parking Incidences	Parking Occurrences	%age of Parking Incidences	
		6		12	
0-3 hours	0	0%	4	33%	+4
3-7 hours	2	33%	4	33%	+2
Greater than 7 hours	4	67%	4	33%	0

Percentage Occupancy	Occupancy (Hours)		Difference after pool opening
	Thursday 28 th April	Thursday 19 th May	
0-10%	2.25	2.75	+0.5
11-20%	1	0.25	-0.75
21-30%	0.25	0.5	+0.25
31-40%	0.75	0.5	-0.25
41-50%	7.75	2.25	-5.5
51-60%	0	1.5	+1.5
61-70%	0	3.25	+3.25
71-80%	0	1	+1
81-90%	0	0	0
91-100%	0	0	0

Comparison of Occupancy - Station Road South Car Park



Kempock Street – On-Street
1 hour

1 hour	24
Disabled	4
Loading/ 1 hour	3
Total Spaces	31

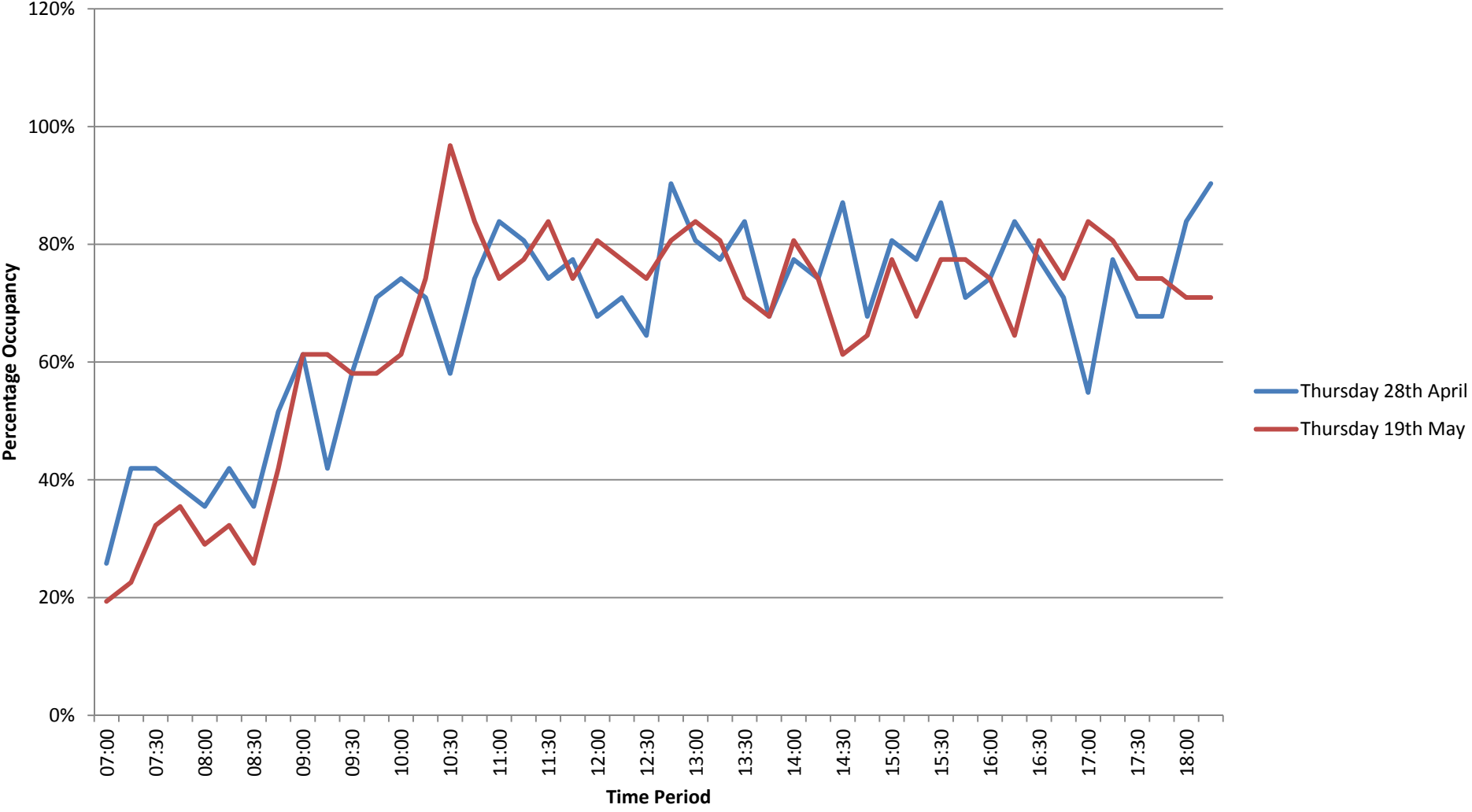
It should be noted that these spaces are assuming that vehicles park efficiently.

	Thursday 28 th April	Thursday 19 th May	Difference after pool opening
Average use 9am-5pm	74%	74%	0%

	Thursday 28 th April	Thursday 19 th May	Difference after pool opening
Max number of vehicles parked	28	30	+2

Duration of Stay	Thursday 28 th April		Thursday 19 th May		Difference after pool opening
	Parking Occurrences	%age of Parking Incidences	Parking Occurrences	%age of Parking Incidences	
		321		307	
0-1 hours	267	83%	260	85%	-7
1-2 hours	41	13%	30	10%	-11
2-3 hours	6	2%	9	3%	+3
Greater than 3 hours	7	2%	8	3%	+1

Comparison of Occupancy - Kempock Street (On-Street)



Lower Kempock Street – On-Street

1 hour

1 hour	35
Disabled	2
Total Spaces	37

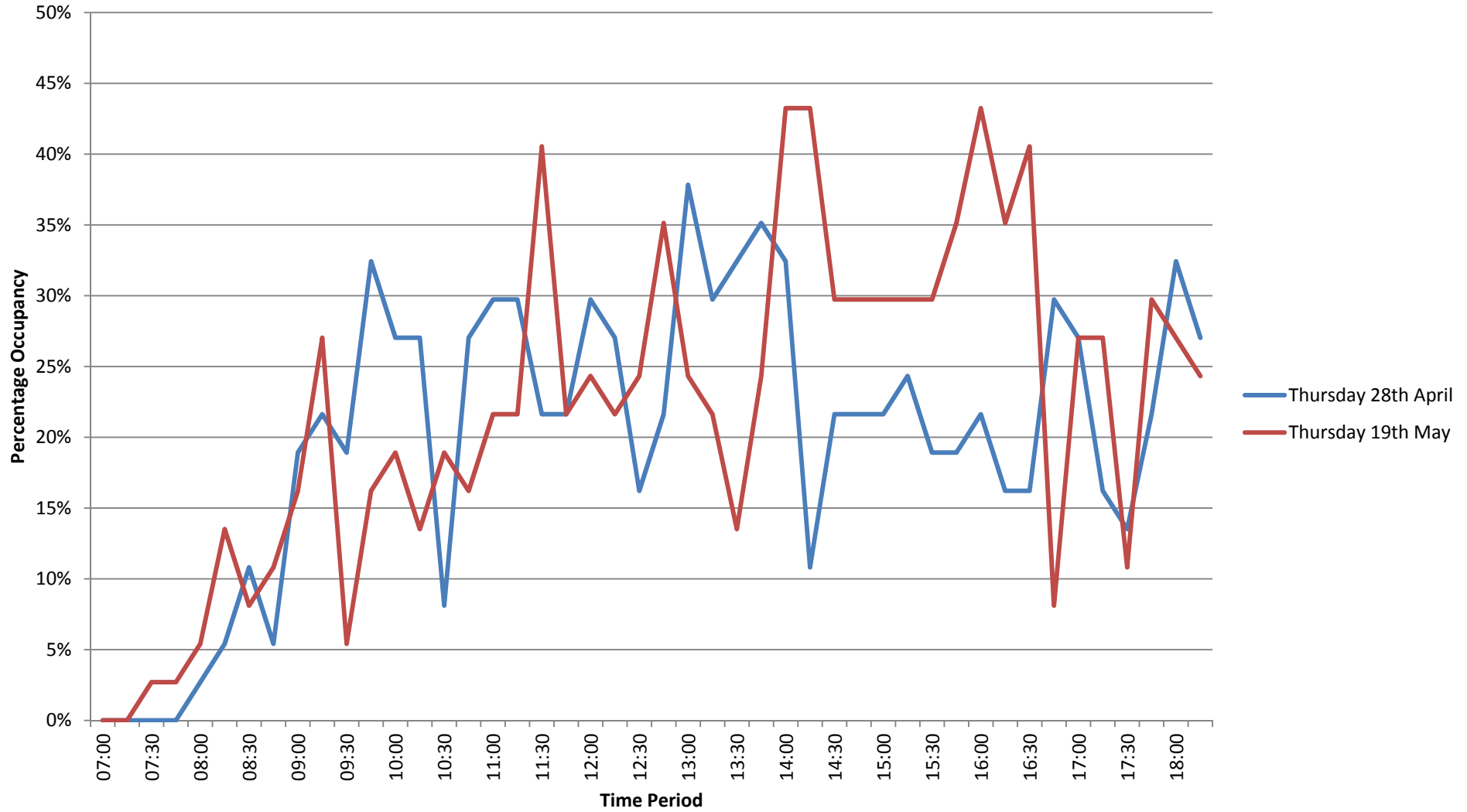
It should be noted that these spaces are assuming that vehicles park efficiently.

	Thursday 28 th April	Thursday 19 th May	Difference after pool opening
Average use 9am-5pm	24%	26%	+2%

	Thursday 28 th April	Thursday 19 th May	Difference after pool opening
Max number of vehicles parked	15	16	+1

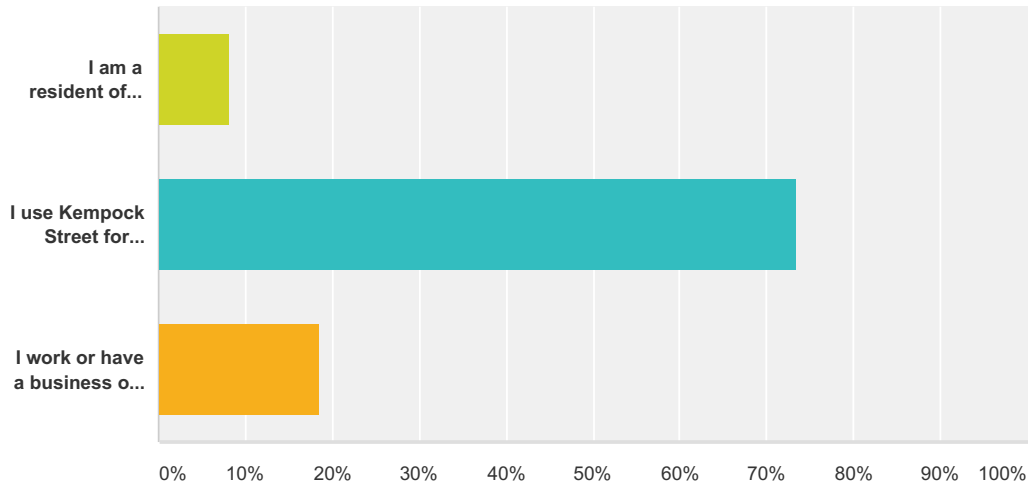
Duration of Stay	Thursday 28 th April		Thursday 19 th May		Difference after pool opening
	Parking Occurrences	%age of Parking Incidences	Parking Occurrences	%age of Parking Incidences	
		154		157	
0-1 hours	144	94%	140	89%	-4
1-2 hours	9	6%	15	10%	+6
2-3 hours	0	0%	2	1%	+2
Greater than 3 hours	1	1%	0	0%	-1

Comparison of Occupancy - Lower Kempock Street (On-Street)



Q1 Which description best applies to you:

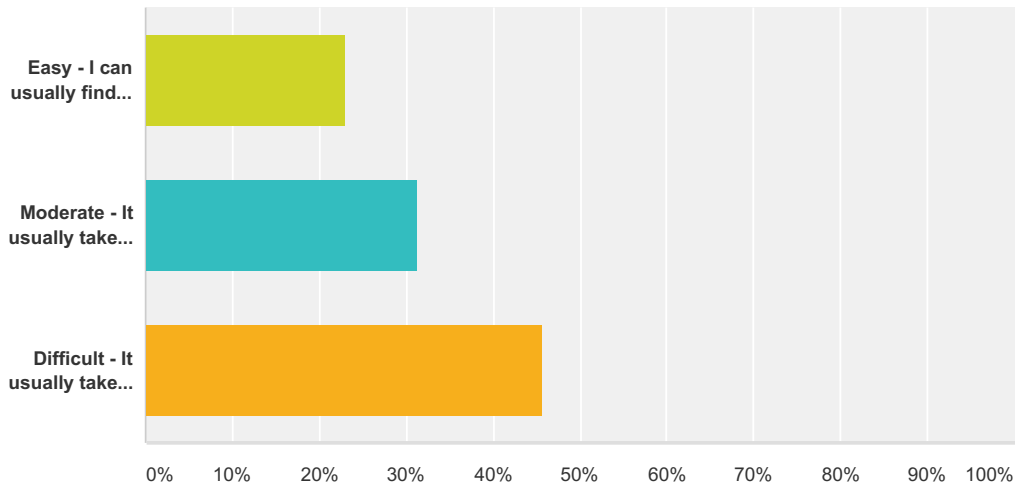
Answered: 572 Skipped: 1



Answer Choices	Responses	Count
I am a resident of Kempock Street	8.04%	46
I use Kempock Street for shopping/ business/ leisure	73.43%	420
I work or have a business on Kempock Street	18.53%	106
Total		572

Q2 In general, how easy is it for you to find a parking space in the area at a place and time to suit you?

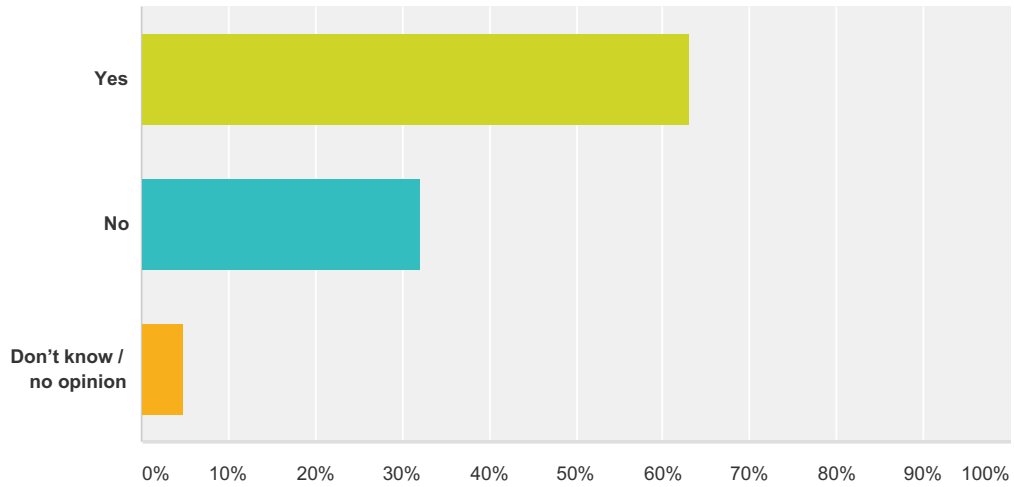
Answered: 571 Skipped: 2



Answer Choices	Responses
Easy - I can usually find a suitable space straight away.	22.94% 131
Moderate - It usually takes me a few minutes to find a suitable space, or I have to park a little further away than I would like.	31.35% 179
Difficult - It usually takes me a significant time to find a suitable space, or I have to park much further away than I would like.	45.71% 261
Total	571

Q3 Do you think there is a parking problem on Kempock Street and Lower Kempock Street area both on-street and in the car parks?

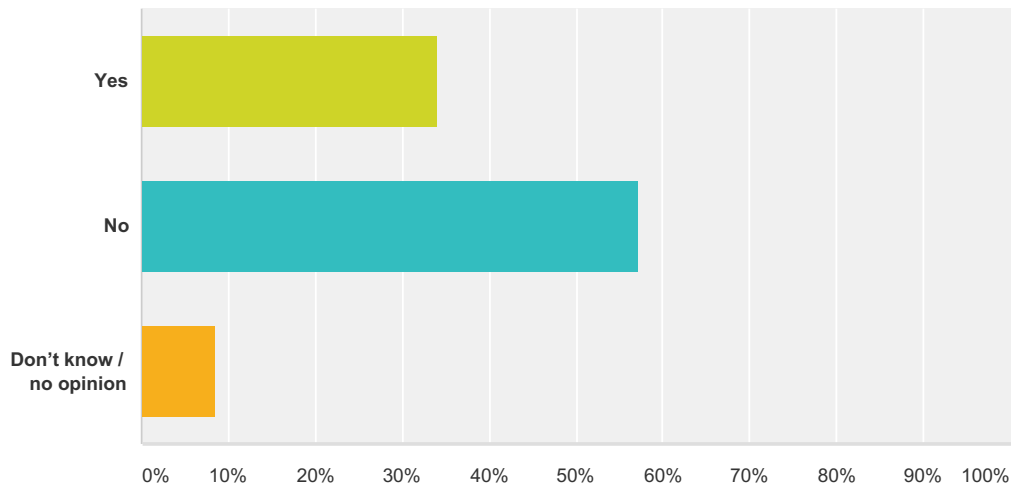
Answered: 567 Skipped: 6



Answer Choices	Responses	
Yes	63.14%	358
No	32.10%	182
Don't know / no opinion	4.76%	27
Total		567

Q4 Do you believe that the current parking system has benefited the town centre?

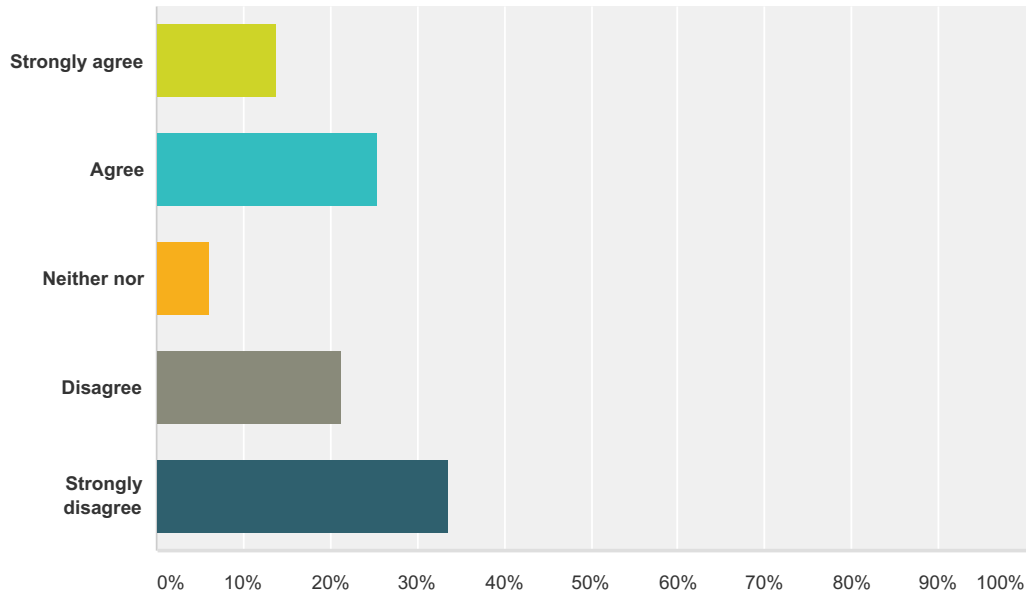
Answered: 569 Skipped: 4



Answer Choices	Responses	
Yes	34.09%	194
No	57.29%	326
Don't know / no opinion	8.61%	49
Total		569

Q5 Do you agree that on-street parking Kempock Street and Lower Kempock Street should be limited to 1 hour to provide a better turnover of spaces?

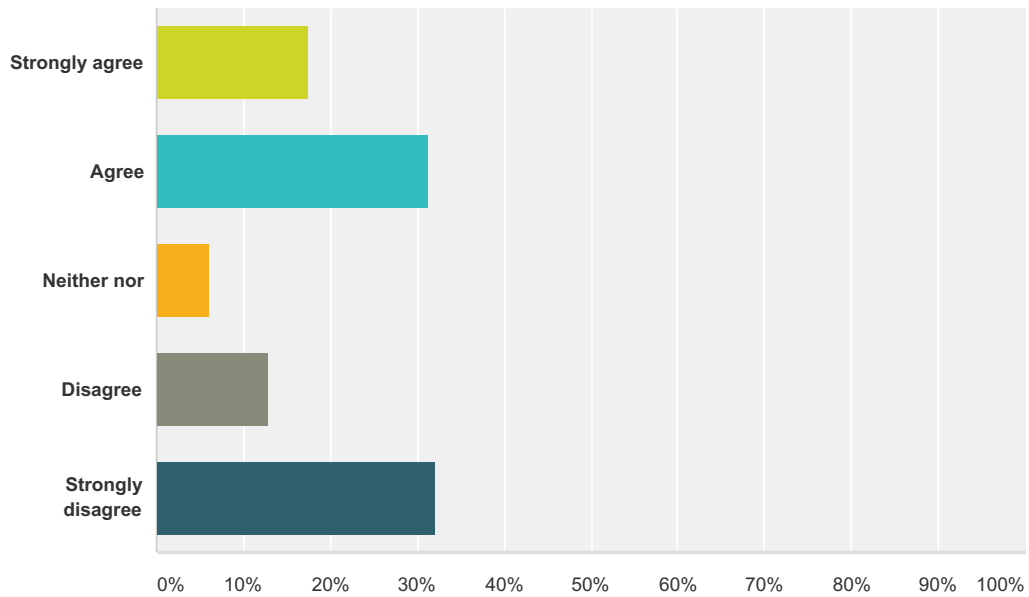
Answered: 571 Skipped: 2



Answer Choices	Responses
Strongly agree	13.84% 79
Agree	25.39% 145
Neither nor	5.95% 34
Disagree	21.19% 121
Strongly disagree	33.63% 192
Total	571

Q6 Do you agree with the requirement to restrict some of the parking in the car parks off Lower Kempock Street to 3 hours to create turnover of spaces and the opportunity for people to visit shops and businesses in Kempock Street?

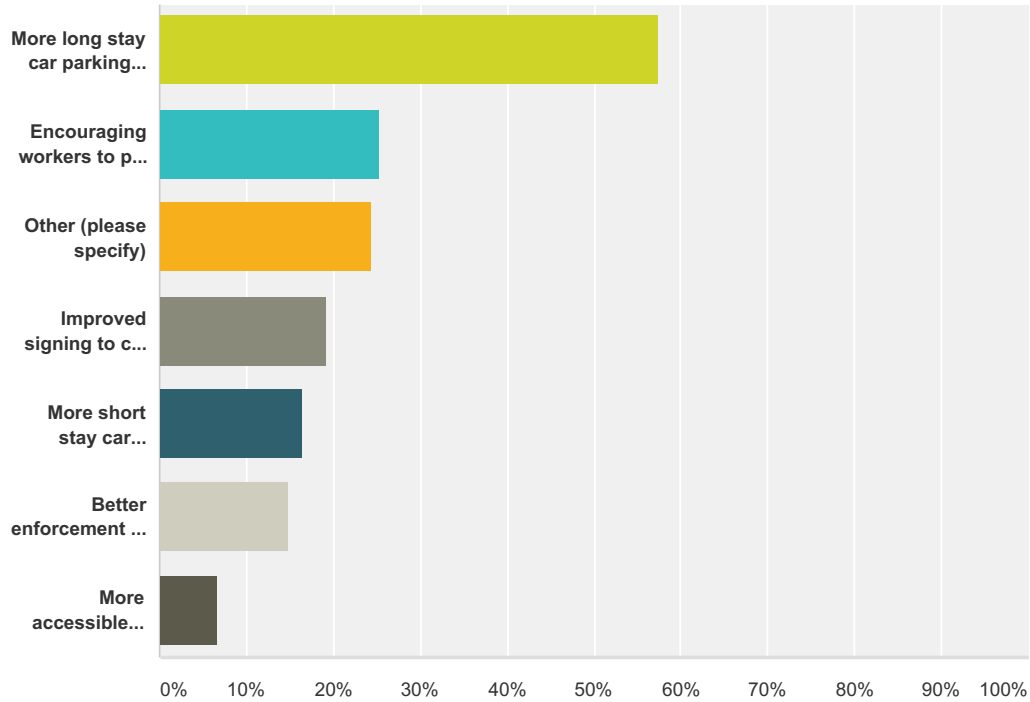
Answered: 570 Skipped: 3



Answer Choices	Responses
Strongly agree	17.54% 100
Agree	31.40% 179
Neither nor	5.96% 34
Disagree	12.98% 74
Strongly disagree	32.11% 183
Total	570

Q7 What would improve your parking experience in Gourock town centre? Please tick all that apply.

Answered: 555 Skipped: 18



Answer Choices	Responses
More long stay car parking spaces	57.48% 319
Encouraging workers to park further away and free up parking in the town centre for shoppers/ residents	25.23% 140
Other (please specify)	24.32% 135
Improved signing to car parks	19.28% 107
More short stay car parking spaces	16.58% 92
Better enforcement of parking rules (Parking Attendants)	14.77% 82
More accessible (disabled) parking spaces	6.67% 37
Total Respondents: 555	

#	Other (please specify)	Date
1	Parking permit	5/23/2016 8:01 AM
2	Remove time restrictions	5/23/2016 7:55 AM
3	Just open car park up with no time restrictions (ask calmac to organise other parking for their employees)	5/23/2016 7:54 AM
4	Residents parking permit	5/23/2016 7:52 AM
5	all the lower car park free	5/23/2016 7:46 AM
6	Parkign in lower kempock street free all day	5/23/2016 7:46 AM

Gourock Town Centre Parking Survey

7	Residents permit	5/23/2016 7:45 AM
8	Or no restrictions	5/23/2016 7:39 AM
9	Give residents parking permits	5/21/2016 12:12 PM
10	Resident permits. Wider bays for commercial vehicles.	5/21/2016 11:59 AM
11	I feel it is ridiculous that if I cannot find a space in the free parking area that I should set up a parking timer in order to go to a shop for two minutes, also any visitors coming in may look and think no I'll just drive by this wonderful town as I may be over 3 hours, the turnover thing is stupid, i know people working there who have to move their cars every 3 hours, how is that fair? Why should they park further away from their place of work? Your council and ideas are a joke	5/19/2016 11:41 PM
12	Parking in Gourock Town Centre is now amazing. I no longer drive straight through as I can't get parked. I know a simple drive down to lower kempock street and I can use the 1 hr parking behind the shops - I have never not been able to get parked since the new system was put in place.	5/19/2016 6:42 PM
13	Much better lighting in Lower Kempock Street at night	5/19/2016 4:58 PM
14	More spaces for those who work and live in the area!!	5/19/2016 4:56 PM
15	People need to be encouraged to spend time in the town centre or it will result in many more shops closing just like the way the parking restrictions have affected Greenock Town centre	5/19/2016 9:40 AM
16	Dedicated (non-staff) gym spaces. Move 3+ spaces away from gym during the winter. Greater free access to spaces around the station	5/19/2016 9:06 AM
17	The new car park and Kempock st renovation has ben paid for with council tax and road tax - it is bordering on illegal to re-charge for parking when all people want to do is shop, eat, work or travel. Parking should be free all day every day.	5/19/2016 6:07 AM
18	Workers and commuters do not park where they are supposed to and park in surrounding streets which means residents can not get parked and are reduced to paying for parking in the council car park at the station.	5/18/2016 11:06 PM
19	Pay stations rather than daft discs?	5/18/2016 9:00 PM
20	Saturdays should be totally unrestricted to promote weekend tourism/visiting/shopping/dining.	5/18/2016 10:37 AM
21	Do not quite see the sense in having parking discs for upto 3hrs in one part of car park. Just have all day parking everywhere. There are now more spaces anyway so plenty for everyone to park for any time.	5/17/2016 1:02 PM
22	Remove the complication of different rules for lower Kempock Street, make it all 2 hr parking free. Who needs to be at the Gourock Pool / Gym for more than 2 hours? That free parking is full every morning before 07.30hrs.	5/17/2016 11:54 AM
23	Resident Parking Permits	5/17/2016 9:40 AM
24	more free parking	5/17/2016 8:30 AM
25	Residents parking permits	5/17/2016 2:19 AM
26	Can we get rid of the badges? Cant we move to mobile apps and parking meters?	5/16/2016 9:21 PM
27	2 hour restriction at swimming pool	5/15/2016 10:45 PM
28	I'm happy with me road layout and parking in Gourock. Please don't start these one hour restrictions as there are in Greenock. Could live with three hour. One hour not enough time.	5/15/2016 9:28 AM
29	Residents permit o park in Kempock St carpark .	5/14/2016 12:23 PM
30	Constant parking for those who live in Albert Road as well as Kempock Street	5/13/2016 5:43 PM
31	Confusing system - long stay and 3 hours in same carpark. Longstay is always full. 3 hours is empty.	5/13/2016 9:34 AM
32	Unrestricted parking	5/12/2016 10:02 PM
33	Are these not questions that you should have asked before we were made to tolerate almost a year of disruption that has resulted in a number of businesses having to close as a result!!	5/12/2016 8:49 PM
34	Parent and child spaces	5/12/2016 8:32 PM
35	The area of the Car Park nearest the Gym/Swimming Pool should be restricted to 2 hours as it is unlimited just now and it means if you are using either of these facilities you normally end up at the other end of the Car Park, which is fine in Summer but is not in Winter	5/12/2016 7:04 PM
36	To encourage visitors advise them when they park in time limited areas where they can get parking discs. Alternatively have a machine to dispense these discs say for a small fee, which could go to charity.	5/12/2016 6:23 PM

Gourock Town Centre Parking Survey

37	I think all the free car parking spaces are taken up with Scotrail customers who would rather walk from the free spaces than park in the station car park, pay their fee and then queue to get their money back>	5/12/2016 4:43 PM
38	Leave the car park as it was, completely free and with no restrictions. As a resident I can clearly see that there are less cars coming to Gourock as a result of these ridiculous restrictions and that, for sure, is having an effect on the local economy.	5/12/2016 1:47 PM
39	If you estimate how many people are park at peak times and create enough spaces then there should be no need for time limits. If you want to encourage people to come visit the town you can't then restrict there stay. This will put people off coming. Let's say a family come to visit and want to use Gourock pool for the day and then say go wrong the shops, then go for dinner. This is going to take a lot longer than 3 hours.	5/12/2016 11:08 AM
40	There are no parent and child spaces and bays are not big enough to get car seats in and out if someone parks next to you. Please consider parent and child spaces for car park.	5/12/2016 7:25 AM
41	Residents need consideration and permits.	5/12/2016 3:36 AM
42	Permits for residents in kempock St. Albert road	5/11/2016 10:06 PM
43	the 3 hour part of lower kempock lies more or less empty for much of day, if it was say 5 hours workers can move car at lunchtimes	5/11/2016 9:44 PM
44	Parking Permit for Residents	5/11/2016 9:13 PM
45	Gourock pool workers need more parking spaces as people who use the shops on upper kempock street steal the spaces meaning people who work there end up getting fines	5/11/2016 8:50 PM
46	Please stop all these different sections in the same area. I never know how long I can park for.	5/11/2016 8:25 PM
47	The entrance to lower kempock st car park should be the 2nd road. as it stands you go in the first road, if you cant find a place but want to go back round you need to go right round again.	5/11/2016 7:33 PM
48	make kempock st. back to to way system as before and bring back the car park as it was. extend the car park over to the station. as for the numpty who decided to make spaces outside the vet and chemist on shore st. this is madness as cars entering the health center are causing tailbacks to john st. as traffic cannot pass on the near side due to cars parked there. also the charges introduced at the station car park is making cal mac workers using the chalmers st. car park as a works car park, and as a resident of chalmers street i find it difficult to get a place to park. take charges away and return to the old system ,what a waste of money this project was..	5/11/2016 7:16 PM
49	3 hour parking should be nearer swimming pool/ gym, because of volume people using the facilities	5/11/2016 6:15 PM
50	A less complicated system that doesn't result in one half of car park totally full while other half underused!	5/11/2016 5:46 PM
51	remove the restrictions	5/11/2016 4:37 PM
52	There are shop workers taking parking places outside their place of work on Kempock st	5/11/2016 3:22 PM
53	Turn the the car park back to the original system. Make kempock street two way system. Also etend the	5/11/2016 3:07 PM
54	Resrtictions are suitable on Kempock St, but not on Lower Kempock Street. The space there has increased by over 40 spaces.	5/11/2016 2:06 PM
55	Less confusion on the regulations - how is it known whether I am using the pool etc	5/11/2016 1:52 PM
56	How do visitors display disc which they dont have?	5/11/2016 1:46 PM
57	Parking permits for residents in gourock main street	5/11/2016 1:18 PM
58	No preferential spaces should be given to certain businesses. All business people should be treated the same	5/11/2016 12:59 PM
59	return to original parking. The Council only want to raise revenue through parking restriction	5/11/2016 12:55 PM
60	more spaces	5/11/2016 12:48 PM
61	2 or 3 hour spaces near pool/gym	5/11/2016 10:46 AM
62	No Limits to how long you park for like before.	5/11/2016 10:45 AM
63	Parking meters?	5/11/2016 10:44 AM
64	Residents and local workers should be encouraged to use a dedicated section of the car park to allow access for short stay visitors and leisure users	5/11/2016 9:41 AM
65	The three hour thing is ridiculous and that area of the car park is always empty therefore highlighting the need for more long stay. Why have the limit there at all? Why go to the trouble of building a car park that a lot of people can't even use?	5/11/2016 9:24 AM

Gourock Town Centre Parking Survey

66	On street parking on Kempock St is on the wrong side of the road. It would be easier to determine if it is safe to pull out in this situation	5/11/2016 8:20 AM
67	permits for workers	5/11/2016 8:19 AM
68	Why can't we have meters? Like other places?	5/11/2016 7:18 AM
69	Resident permit	5/11/2016 7:02 AM
70	Scrap it.	5/11/2016 6:45 AM
71	Parking permits for residents.	5/11/2016 6:28 AM
72	clearer (short but more plentiful) signage about restrictions for each zone, readable from parking space or close by. e.g. "okay to park here for 1 hr with disk"	5/10/2016 11:49 PM
73	Residents permits as the 3hr parking is underused the majority of the time. I have returned home sick from work and had to wait nearly 25 minutes for a space incase I was too ill next day, which I was. During the weekend and nice weather I am unable generally to get a space in all day parking and need to return to my car and move it to another space. Those using the gym or pool like to park near to it so don't use the 3hr spaces in favour of all day which is closer. I did not chose to live here with these restrictions and need to make alternative arrangements when I have a weekend away or holidays when I'm unable to park in all day during the day when it's busy. This is a battle every day that is getting worse as the weather improves and pool is open. Please help the residents!	5/10/2016 11:21 PM
74	Split between all day and 3 hour seems to be wrong. Need more all day and this should be moved to station end to ensure gym users are not filling these unnecessarily	5/10/2016 11:17 PM
75	Get rid of the parking disks	5/10/2016 11:13 PM
76	Less hounding people by parking attendants	5/10/2016 11:11 PM
77	Less rules and restrictions.....just leave it all free. Complex rules and different areas put me off stopping in Gourock now.	5/10/2016 10:56 PM
78	Encouraging those that can walk to walk. Sorting out clear delivery times to allow goods to get into shops.	5/10/2016 10:41 PM
79	Parking should have no restrictions, too confusing .	5/10/2016 10:12 PM
80	The 3 hour parking is too big compared with the all day parking which is insufficient.	5/10/2016 10:08 PM
81	Workers should be in lower Kempock St , some park outside the place of work for hours // the signs for parking times are too small // keep the east of the carpark to 3 hours and the west to free at the pool .	5/10/2016 9:34 PM
82	Do away with parking restrictions	5/10/2016 9:20 PM
83	More free spaces for residents	5/10/2016 9:07 PM
84	Better lighting in Lower Kempock Street which is very dark at night	5/10/2016 7:31 PM
85	Permits for residents and a permit area provided for residents	5/10/2016 7:17 PM
86	No charges	5/10/2016 7:15 PM
87	Vigorously pursue those parking on pavements and double yellow lines including the one with the disables badge parked in front of the dentist. This creates a pinch point as it is close to the lane restriction. I understand there is some leeway for disabled badge holders, but surely not to the detriment of road safety and were it is blatantly parked there almost permanent, not just for pick up / drop off. Also be delighted if those turning the wide pavement at the side of the pool into a car park, quietly slipped into the sea, selfish lazy people creating an eyesore.	5/10/2016 6:47 PM
88	Don't charge, it's a complete joke.	5/10/2016 6:39 PM
89	The whole system of the discs in Inverclyde is a joke. The discs are not good enough quality and the wardens watch u get out ur car and if u have forgotten about the stupid disc then they come and charge you straight away. The wardens need to have a bit of common sense . The town did fine without the discs why do we need them now. Total joke.	5/10/2016 6:37 PM
90	Parking Permits for residents	5/10/2016 5:34 PM
91	No need for parking discs to be displayed, need longer waiting times in car park	5/10/2016 5:13 PM
92	Gym side should have allocated spaces as people in flats and shop owners take all spaces early in morning as this is a long stay zone. Completely unfair to paying gym members and gym losing custom. Also residents using long stay section allowing no opportunity for others	5/10/2016 5:01 PM

Gourock Town Centre Parking Survey

93	It seems that the long stay is in the wrong place - shouldn't it be closer to the station, leaving the rest of the park for short stay, users of the pool & gym, shoppers, those eating and drinking.	5/10/2016 4:39 PM
94	No time restriction	5/10/2016 4:35 PM
95	Specified parking for business owners and local residents	5/10/2016 4:24 PM
96	All lower kempock street should be free. People going to the gym, pool and leaving car overnight take up spaces and people who work there cannot park and have to move car after 3 hours in the middle of a shift. Absolutely not ideal.	5/10/2016 4:12 PM
97	Restrict short stay to Kempock Street only	5/10/2016 4:03 PM
98	remove the 3 hour time restriction in car park.	5/10/2016 4:00 PM
99	Reinstate free parking.	5/10/2016 3:55 PM
100	Change everything back to how it was before the Council decided to destroy it with a one-way system.	5/10/2016 3:49 PM
101	More parking- what is the purpose of the green mound? Why not use it for more parking? Additional provision for longer stay spaces if using the gym/swimming pool. Often the long stay spaces are all taken early in the day and people often wish to spend all day at the pool, but then can't find suitable parking.	5/10/2016 3:24 PM
102	Take action against the car owner who every evening parks his car on the double yellows on the west bound carriageway just after Weor & McClafferty dentists, right beside the temporary road dividers	5/10/2016 2:11 PM
103	Look at Pay & Display options for a Long Stay area, sometimes 3 hours isn't enough.	5/10/2016 2:09 PM
104	Rigidly enforce the double yellow lines in Kempock Street	5/10/2016 1:57 PM
105	The whole of Lower Kempock Street Car Park should have unrestricted parking.	5/10/2016 1:26 PM
106	Free parking	5/10/2016 1:22 PM
107	Lift the parking restrictions	5/10/2016 1:21 PM
108	Remove parking charge next to Gourock Station	5/10/2016 1:15 PM
109	Get rid of the seagulls.	5/10/2016 1:09 PM
110	Remove all time limits	5/10/2016 1:03 PM
111	No time restriction in lower car park	5/10/2016 12:53 PM
112	Should say on entrance to car park "Disc Area" on the road "	5/10/2016 12:21 PM
113	Make the restrictions monday to friday like everywhere else in inverclyde	5/10/2016 12:19 PM
114	the shops and residents used to park there cars all day and no other people could get parked	5/10/2016 12:15 PM
115	Residents permits. They have them in Greenock so it is grossly unfair that we don't. if I leave a coveted parking space I can't get back in before 5p.m. when commuters, who take up the long stay car park from 8a.m. return to their cars.	5/10/2016 12:12 PM
116	Lift cars away that don't park legally.	5/10/2016 12:08 PM
117	Put it back to the way it was	5/10/2016 11:56 AM
118	Over zealous Parking Wardens are keeping people away.	5/10/2016 11:51 AM
119	Parking arrangements are fine and are beneficial to everyone	5/10/2016 11:49 AM
120	Stop residents using car park and the pavement near the pool. Enforce parking restrictions on Kempock street. Vans and cars still park on pavement and double yellows on left heading to cloch	5/10/2016 11:35 AM
121	Would be better if on upper road parking was limited to 15mins to allow for customers popping into shops! More disabled spaces on upper road. In carpark limit say a third to one hour, another third to say 3 hour limit and the last third and furthest away from shops for shop workers and anyone wanting to stay longer than three hours and make lower road/carpark no overnight parking!	5/10/2016 11:34 AM
122	Better information in general about parking restrictions. A lot of people are still unsure of the parking times/places.	5/10/2016 11:33 AM
123	Put additional spaces on Kempock street on the other side of the road	5/10/2016 11:31 AM
124	Total revocation of any restrictions. There is no need for them .	5/10/2016 11:28 AM
125	Gym users can't get parked near the gym for people leaving their cars and going for trains to work leaving them in the spaces all day. Ok when weather is fine but not ideal when it's pouring down	5/10/2016 11:17 AM
126	if I'm out and want to leave the car overnight there is little option.	5/10/2016 11:15 AM

Gourock Town Centre Parking Survey

127	Reserved spaces for residents, with resident permits	5/10/2016 11:15 AM
128	Out of town people don't visit because disc parking is not understood , parking charge would be better in lower kempock street	5/10/2016 11:14 AM
129	Allow parking without any restrictions or conditions	5/10/2016 11:07 AM
130	Same car frequently parks opposite pool on west bound side	5/10/2016 10:56 AM
131	The long stay parking in the car park on Lower Kempock Street needs to be extended. There are too many of the 3 hour stay spaces.	5/10/2016 10:54 AM
132	parking discs are a terrible idea - people visiting from out of town won;t have these and will find the system confusing, parking discs discourage people from visiting	5/10/2016 10:52 AM
133	Suggest the free parking and 3 hour parking in lower Kempock St change places. People using gym would be less than 3 hours	5/10/2016 9:44 AM
134	People still park on double yellows on kempock street.	5/10/2016 9:37 AM
135	Removing parking restrictions	5/10/2016 9:20 AM

Gourock Town Centre Parking Survey

Q8 Please use the space below to make any additional comments

Answered: 232 Skipped: 341

#	Responses	Date
1	Today i had to park up in Binnie Street thus using a space of the residents of Binnie Street ,which will again have a knock on effect on the surrounding streets.	5/21/2016 12:12 PM
2	Current restrictions are deterring visitors. Signage is poor. Swimming pool open and 3 hour parking is inadequate.	5/21/2016 11:59 AM
3	To be honest there is so much I wish to say, I won't bother because there is no point as your inadequate council won't bother their . and there is so much to say it'll waste my time typing, one thing I will say... The French bowl area down Gourock has been well worth the money, everyday I see many using the facilitie... That is sarcasm if you cannot tell and what a waste of money that venture was	5/19/2016 11:41 PM
4	As a resident of Albert Road the parking has always been difficult but with the introduction of restrictions in the car park and fewer spaces parking for me has become very problematic. I believe the residents of Albert Road most affected by the shops/gym/swimming baths and ENORMOUS BUS STOP shop be issued with permits. I believe restricted parking on Kempock Street should remain but the car park needs more spaces and fewer restrictions.	5/19/2016 9:18 PM
5	Parking in Gourock Town Centre is working well. It would be wonderful if the planning dept could come up with further plans for Albert Road. An obvious benefit would be to reduce the size of the Bus Stops and also ensure the roads dept have a measurement they work on for Disabled spots and dont just draw round cars and make spaces way more than needed. I have no problem with disabled parking. There are three just outside my door and all three residents require them but what they don't require is space for 5 cars in 3 disabled spots!	5/19/2016 6:42 PM
6	After about 8.30am there are no spaces in the long stay and threfore I either have to park in the 3 hour area and move my car out after the time limit then back again. This disrupts my work and I have often received a ticket due to being stuck in meetings, etc	5/19/2016 4:55 PM
7	People are using the free spaces behind Kempock St to park when they use train to Glasgow. There are few free places after 9am	5/19/2016 1:10 PM
8	The town centres are now very unwelcoming in Inverclyde which will ultimately affect trade. I think the option above to 'encourage workers further away and free up parking in the town centre for shoppres/residents' is a very unfair comment as without these workers many of the smaller shops would see a drop in trade. If people are froced to travel to work on public transport which is much more costly than travelling by car then they will be much more likely to take a packed lunch which will affect trade. Workers are not the cause of the parking problems it is the incompetency of the local authority to free up enough land for free parking	5/19/2016 9:40 AM
9	I do broadly approve of the changes. It seems safer now too.The whole places looks better but there is a lack of space. The gym/pool is a unique facility and should be considered separately. I think it'll be chaos in the holidays otherwise.	5/19/2016 9:06 AM
10	As above	5/19/2016 6:07 AM
11	It would be benifitial if a resident only permit parking on Bath St, Adalade, Castle Mansions et al was introduced. Residents and busines owners would be able to get their and their customers cars parked without problems. These problems stemed from the minute the commuter car parks turned to pay machine car parks. Resident, library users, business workers and visitors have a difficult time getting parked and taking into account that a large number of them are elderly. Gourock has been turned into a communter car park for Glasgow and visitors are not stopping to use the shops. You have not listened to genuine concerns from the people who work and live in this area and we feel once again ignored by in favour of ideas implimented on us by people who know next to nothing about our town and you are slowly but surely turning it into a drive through car park.	5/18/2016 11:06 PM
12	My mum stays on Albert Road, just beyond the baths. When visiting parking is impossible on Albert Road. So much so that people are parking vertically on the pavement. This is not because they are too lazy to walk, simply a reflection of an inadequate amount of available spaces. The gym entrance has made this situation worse. The 45ft long bus stops certainly don't help the situation.	5/18/2016 8:51 PM
13	The attendants are ... They give inverclyde a bad name	5/18/2016 1:46 PM
14	Generally it's pretty good but need more weekend flexibility.	5/18/2016 10:37 AM

Gourock Town Centre Parking Survey

15	Do not quite see the sense in having parking discs for upto 3hrs in one part of car park. Just have all day parking everywhere. There are now more spaces anyway so plenty for everyone to park for any time. Good turnover of spaces most of time.	5/17/2016 1:02 PM
16	Remove the double disabled spaces on Kempock Street and make 2 single spaces elsewhere along that stretch. Cars tend to speed down lower Kempock Street - speed limit signs? Replace metal poles containing statutory signage and place these signs on metal railings. This will reduce street clutter. Access chamber (manhole) covers on lower Kempock Street require levelling as they rock when vehicles pass over. Kempock Street should be 1hr free with no return within 2hrs and all of lower Kempock Street (all one car park) should be 2hrs free with no return within 1hr. RI should have assisted owners of the pathways from the 2 streets to upgrade with better lighting and more even walk surfaces. Maybe it's not too late!	5/17/2016 11:54 AM
17	Resident Parking Permits	5/17/2016 9:40 AM
18	Appreciate free for all could not continue but current arrangements are impacting negatively on Greenock and Gourock. We are not St Andrews,Edinburgh etc where people will be willing to do research re parking prior to visiting the area particularly during the week .Comments made to me by people is that they now pass through Inverclyde as it is too confusing to work out where the car parks are ,issue of obtaining discs with no allowance being given to finding one. I forgot to put my disc on one day but returned within 14 mins to be greeted with a ticket. I live and work in Inverclyde .People working in Inverclyde and in town centre contribute greatly to local economy. I am hopefully getting healthier by parking further and further away for free parking but it also means I shop very rarely in Greenock town centre and it is a pain going to Gourock during the week	5/17/2016 8:30 AM
19	I work evenings and overnights - parking has become very difficult, as the unrestricted space s are often full, while the 3 hour spaces lie empty . I have had to wait up to 50 minutes for an unrestricted space to free up, even at 7.30am, so that I can sleep during the day and not have to get up to shift the car. Residents in 3 areas of Greenock have been given permits, so why not residents of Kempock Street ? This would lead to more efficient use of spaces, as the unrestricted area is often full, with most of the 3 hour spaces empty - this is a waste of space, as residents then are faced with parking some distance away whilst looking at the empty spaces from their flats. The opening of the pool last week has only exacerbated this problem. I complained in writing to the council, however their reply and suggestions on how to work around the 3 hour permit did not apply to me, despite me explaining that I worked at night and was asleep all day. There were never any issues with parking before. Allowing residents to use any space in the carpark without time restriction would be an intelligent use of the spaces available, rather than one end being full all of the time gand residents unable to find a space there) and the other end lying largely empty most of the time. If I am having difficulty getting an unrestricted space at 7.30am or 1.30 am, something is wrong with the system. To expect me to walk half a mile at 2am in the dark and the pouring rain as a lone woman, when there are visible spaces from my flat window is unacceptable.	5/17/2016 2:19 AM
20	I am a Gourock resident for many years and until the new parking rules came I had never experienced a problem, has anybody asked what was the problem and why all the rules and restrictions, we are supposed to be encouraging visitors & tourists not turning them away.	5/16/2016 10:37 PM
21	Gourock has potential to grow, but parking is key to regular visits, including walks along the waterfront	5/16/2016 9:34 PM
22	I think the parking restrictions will have a negative impact on local businesses and tourism in the local area . Not having parking restrictions would encourage more visitors and encourage more people to shop in gourock centre	5/16/2016 9:20 PM
23	restriction needed or workers and residents would monopolise. would prefer if 3 hour space was more flexible, eg meter. better for eating. why is gourock restricted on Sat. when greenock is not.	5/16/2016 4:02 PM
24	I don't really go to Gourock to shop as much now because parking is a nightmare.	5/16/2016 3:27 PM
25	Really like the changes, much easier to park than before - Gourock resident	5/16/2016 10:22 AM
26	First time using was a bit confusing but now it is fine	5/16/2016 9:19 AM
27	Confusion caused by the fact the car park has some paid spaces and some for free. Make it all for free and limit us to 3 hours. Inverclyde are driving people to Braehead for shopping as you can park fro free and not worry if you are in a paid area, non paying area, disc area etc. Simplify things please	5/16/2016 8:18 AM
28	The lower Kempock st car park should be restricted to 2 hours	5/15/2016 10:45 PM
29	It is very good now. We find parking for shopping and leisure (off peak for us) is great. Thank you.	5/15/2016 12:11 PM
30	See above. Please don't start enforcing time restrictions in parking in Gourock.	5/15/2016 9:28 AM
31	Get it back to what it was. I have to wait for a space every day when I come back from dropping of my son at school. I wat with my other son who is 3 for about 30 minutes everyday shocking.	5/14/2016 2:58 PM
32	loading only spaces for businesses	5/14/2016 12:23 PM

Gourock Town Centre Parking Survey

33	The whole parking system in Gourock is too complicated. Some areas unlimited, others restricted, some you pay, others you do not. This applies to both The Kempock street set up and at the station. Residents and shopkeepers should be issued with permits as the free areas are full from early morning due to workers at Coulport who leave their vehicles from very early in the morning.	5/14/2016 12:14 PM
34	Ensure there is adequate all day parking for shop etc. workers also for people attending the swimming pool or gym in order that they do not have to park on Albert Road as this curtails the parking for residents in Albert Road.	5/14/2016 11:21 AM
35	Current parking regs have made a huge difference. Enough of mixed choice . Kempock street flows much easier.	5/14/2016 8:51 AM
36	As an employee at Inverclyde Leisure Gourock Fitness Gym and Outdoor Pool facilities, it is extremely difficult to get parked. The the hourly section is no help whatsoever as shifts last more than double that time, and there is no where to move to Street the the hour stay is up. I have had numerous tickets which I cannot afford die to bring stock in work and not able to move my car from the three hourly section. I feel that staff parking permits world help.	5/14/2016 2:40 AM
37	I am giving up membership for gym and pool as i cant get parked without waiting or walking too far. Time needed to get parked which I dont have as i have pick ups at nursery and school	5/13/2016 8:54 PM
38	I think the '3 hour limit zone' that has been introduced is a shambles. Also requiring the daft parking pass is ridiculous. How do you expect local businesses to attract any tourists/shoppers when the shoppers could be hit with a financial penalty for parking. Common sense would allow free parking in the area	5/13/2016 5:01 PM
39	Huge difference in parking availability - I find I stop off more regularly on my way in our out of town.	5/13/2016 2:32 PM
40	Selfish people need to learn to park by the rules. I'm all for parking wardens	5/13/2016 2:06 PM
41	Gym users are parking on Albert Road no spaces for residents the way the park was before less problems	5/13/2016 2:03 PM
42	As a regular visitor to the town, I feel that the new parking regulations and the one-way system of traffic through the town centre has been a vast improvement. It seems to me that the signs are very clear and the time limits at each area - on the street and the lower Kempock Street car park, are fair.	5/13/2016 9:48 AM
43	It is very difficult to park for more than 3 hours which is not good for the area. Confusing signage with long stay and 3 hour parking in one car park. Also station car park is appalling. Limited signage in the wrong places means that you do not know that you are not in the station carpark. I recently had a parking ticket although I had displayed a train permit. I did not know I was in a Council carpark. The wardens must have realised this as the train permit was displayed but they ticketed the car anyway. I think people no longer come to Gourock as they are confused as to where they can park.	5/13/2016 9:34 AM
44	changes made too often regarding time limits which causes confusion.	5/13/2016 8:53 AM
45	As a regular user of Gourock gym and swimming pool I object to the maximum 3 hour spaces. The council should be encouraging people to use these facilities and 3 hours is not a long enough time to park, make your way to and from the gym, change, use the facilities as you would like, shower and change. I feel that I am constantly clockwatching when in the pool so that I don't go over the 3 hour time limit. There are not enough unlimited spaces and these are usually taken by nearby residents.	5/13/2016 8:41 AM
46	The new arrangements make it easier to park for shopping, hairdressers and dentists surgeries and will provide parking for visitors to the town in summer months. Please do not increase all day parking. I also think that camper vans should not be allowed extended parking for days and weeks at a time.	5/12/2016 10:50 PM
47	I no longer shop in Greenock due to all the different parking restrictions including these stupid parking clocks you have to display on your dashboard. If Gourock go the same way I won't shop here either.	5/12/2016 10:02 PM
48	During the time gourock pool I opened parking restrictions should be lifted	5/12/2016 9:16 PM
49	I think the current parking is a significant improvement, particularly in Lower Kempock Street. In the past I would have struggled to get parked, and would have travelled elsewhere. I am much more likely to come to Gourock as I have increased confidence that I will be able to park for a short time to complete my business.	5/12/2016 9:05 PM
50	I think that a big part of the problem is that there are a number of train commuters that are occupying area that has no time limit instead of having to pay to park in the (massive and often half empty) station car park. (and why should they pay to use the station car-park if they are using the train?). Now that the Swimming Pool is open for the summer, are bathers now limited to a less than 3 hour bathe to avoid getting parking tickets. What about those that for year had chosen to drive down to Gourock for a stroll around the shops and maybe take a coffee or some lunch in one of the cafes only to find that have a parking ticket as they were not aware of the new parking limitations? Suggestions: Stop the parking charges at the Gourock Station so that commuters do not have to find other 'free' areas to leave their cars. Remove ALL parking restrictions in Kempock Street and the Lower Road (except the areas on the Lower road where Lorries unload for Sainsbury's, etc). Remove the Traffic Wardens - why have you introduced this additional expense? We did not need them before these changes were made, now we have all these 'extra' parking spaces at the Station and our new bigger car park, why do we need them now??	5/12/2016 8:49 PM

Gourock Town Centre Parking Survey

51	Parent and child spaces would allow people to get their babies in and out of the car as the spaces don't allow room for a baby seat to be lifted in and out or a pram to be assembled beside the car. I find drivers are too fast and I feel unsafe.	5/12/2016 8:32 PM
52	Shocking provision for residents!	5/12/2016 7:12 PM
53	Simply unacceptable.	5/12/2016 7:12 PM
54	You have to decide the purpose behind the changes in Gourock. Is it to provide parking to suit visitors, residents and locals. Or is it to raise money through parking tickets. If it's the latter then 1 hour parking is what's required. If its the former, which I'm sure it is then all that's required is that we get the mix of parking right. 1hr for the quick shopper. 3hrs for those going for lunch or coffee , bun and a blether and enough long term parking for those who work there.	5/12/2016 6:54 PM
55	1.See comment under "Other" in previous section. 2. Swap the sections round for different parking in Lower Kempock Street 3. Possibly not related but have large schematics of Gourock showing shops, pool, parking etc. as you enter the area. This may help to promote the area and make visitors stop.	5/12/2016 6:23 PM
56	Open all car parks to all, as the workers on Kempock Street parking in Bath Street, Burgh Walk, thus depriving residents there, of their parking spaces. In fact, Bath Street and Burgh Walk should be for residents only via a permit.	5/12/2016 5:43 PM
57	I think the improvements to Gourock have been fantastic, however, visitors will be put off by the car parking not because of having to pay but the fact that all the free spaces are taken by people who are not visiting but using it to commute out of the town!	5/12/2016 4:43 PM
58	Restriction of heavy goods vehicles. Roads leading to Kempock Street / Lower Kempock Street not designed for such traffic (roads too narrow and they cause quick degradation of road surface).	5/12/2016 4:30 PM
59	why isn't there parking on both sides of kempock street also when i have my grandmother in her wheelchair it is a long way round to reach either end of the carpark to access kempock street	5/12/2016 3:05 PM
60	There wasn't enough parking before the road changes and car park re-development so why would anyone think that it would be better afterwards with less parking and idiotic restrictions.	5/12/2016 1:47 PM
61	The introduction of parking restrictions has caused my fiancee and I great sress. My fiancee is a nurse at IRH who frequently works night shifts. On return from work she has to park in the 3 hour zone as there are no spaces in the long term car park. This means she has to get up during the day to move her car to avoid paying a penalty. This reason alone is sufficient to demonstrate the inadequacy of the current parking rules. I have seen on numerous occasions the short term car park deserted with no one parking in it, I have seen traders of kempock street get tickets or close their shop to move their car at lunch, their busy period, to avoid getting tickets. Parking permits for residents and traders is a must.	5/12/2016 12:58 PM
62	As resident of Kempock street we need to park quite near our homes,not to be fined for parking,and having to move cars around after 3 hours to go find a space somewhere else isn't just right. Strongly believe Kempock street for resident parking and lower Kempock 2 hours for shoppers,car park all long stay,or give us same as Greenock ,permits...	5/12/2016 11:45 AM
63	The cal Mac car park is a massive space and is relatively not used to capacity, surly this is a waste of space. This could be a free car park over a couple of levels which is easy access to the shops and facilities such as Gourock pool.	5/12/2016 11:08 AM
64	one way system is a great impovement to the area	5/12/2016 9:05 AM
65	There should be better delineation between car-parking area with different restrictions i.e. Lower Kempock Street and at the Station	5/12/2016 8:44 AM
66	Stop illegal parking on pavement beyond pool and war mamoiral. Lower Kempock St parking great.	5/12/2016 8:13 AM
67	Gourock has benefited greatly since the new parking restrictions have come into force this year. In the past it was very difficult to get parked. I and many others benefit from the parking restritions and would hope that the current restrictions remain. Many visitors to Gourock now get parked safely and enjoy a visit to the swimming pool, local shops, cafes, bars and businesses.	5/12/2016 7:43 AM
68	Again parent and child spaces should be implemented in this space.	5/12/2016 7:25 AM
69	Everyone wants close to the town, residents, shop workers, patrons of pool & gym, health centre turnover of appointments & pharmacy, could an area for long stay commuters be better planned?	5/12/2016 3:36 AM
70	I use the Gourock Outddor Pool during its opening months and less than a week in I have struggled to find a space to park. I am parking between 7.15 and 9.00 and I can only imagine that it gets worse as the day goes on. It is off putting for visitors and frankly no easier than last summer when the work was going on!	5/11/2016 11:06 PM
71	There needs to be dictated spaces for people using the gym and swimming pool. I have stopped going because I cannot get parked	5/11/2016 10:11 PM

Gourock Town Centre Parking Survey

72	It's hard to get parked as a resident in Albert road. I do think the car park and all the change of traffic, is lovely, and now with pool open no chance of space,	5/11/2016 10:06 PM
73	generally I find one way system fabulous. but would prefer longer free parking for work purposes	5/11/2016 9:44 PM
74	The Parking in the Kempock Street area is near on impossible	5/11/2016 9:13 PM
75	Gourock pool workers need more parking spaces as people who use the shops on upper kempock street steal the spaces meaning people who work there end up getting fines.	5/11/2016 8:50 PM
76	The long stay spaces in lower Kempock st are mostly taken up by patrons using the Gourock pool and gym, when they could clearly use the 3 hour area. Residents who have to park overnight in the restricted area are being systematically targeted by the parking enforcement officers as they are continually in the car park prior to 8 o'clock virtually running around issuing fines to retired residents who had to park there overnight and were not able to move cars before 8am. The residents put up with enormous disruption during the development and were promised no changes to parking to residents in Kempock st and Albert Rd. The reality the residents at times have to park a mile or more from their homes and when they are forced due to bad weather to park overnight in lower Kempock st car park they are unfairly targeted by parking attendants. Kempock st and some of Albert Rd residents require parking permits.	5/11/2016 8:31 PM
77	Remove the yellow lines from the non-parking side of Kempock Street and convert into parking bays, that way you'll double the capacity for shoppers. There's no reason why even the widest vehicles couldn't easily pass safely, now that's it's one-way traffic.	5/11/2016 8:24 PM
78	I agree that we need spaces for shop owners and residents. One hour spaces are good for people who just want to pop into shop or a quick coffee. Unlike Greenock I find it extremely difficult to get even a blue badge space because they have extended the waiting time there,	5/11/2016 8:17 PM
79	It is extremely difficult to go for lunch in the local establishments due to restrictive parking	5/11/2016 7:42 PM
80	Parking in Gourock has greatly improved. The 3 hour section in particular, gives shoppers time to eat and shop in the town. Prior to the improvements and although we live in Gourock, we could very rarely find a parking space and we would often shop in Greenock instead.	5/11/2016 7:41 PM
81	Don't make any changes	5/11/2016 7:23 PM
82	bring back the old system and make no parking on both sides of kempock street. also i tried to phone in a complaint about this and was told i could not talk to anyone and was given a number in england to contact who did not know what i was talking about. went back to inverclyde to find out about this company only to get negative response. when i asked to speak to who is in control of this contract, ie, checking time sheet etc. what a surprise, they did not know. i find this most unusual as i had to go through time sheets of contractors with a fine tooth comb. i would like you to get in touch with me on so i can speak to someone direct	5/11/2016 7:16 PM
83	I have stayed in Gourock for 38 years and never had any problems. I also have an aunt - who lives in Sir Michael Street I have to go up nearly every day and it is a nightmare. I also have the same problem in Sir Michael Street. I think the Council is going mad.	5/11/2016 6:55 PM
84	Too many railings and signs, totally unnecessary. Footpath between car park/road/ Bus stop is too broad. Also people have to walk to far from car park to egress points due to these railings.	5/11/2016 6:15 PM
85	Most businesses in Kempock street open around 9am- 10am yet the 3 hour restriction starts at 8am.	5/11/2016 6:06 PM
86	Clarity required on parking availability in and around train station ground.	5/11/2016 5:46 PM
87	I think the balance of short stay to long stay is wrong. Too many short stay spaces. Residents and workers find it hard to park and constantly are shuffling soacs throughout the day. Less than ideal.	5/11/2016 5:40 PM
88	Being a keen gym user. I've found that since the introduction of the new parking rules - this is been to our disadvantage. Commuters use the free bay next to the gym so that gym users can't, the other parking bays in Lower Kempock Street aren't well sign posted either. I also find the Parking Attendants to be	5/11/2016 4:54 PM
89	The restrictions are killing the down people passing through(to western ferry to highlands) will find a space but have no disc so will be put off using local businesses and use other services across the water or will wait to use services at greenock	5/11/2016 4:37 PM
90	people parking all day to travel to work elsewhere is a problem. less parking long stay would help. 3 hours a little short.	5/11/2016 4:19 PM
91	Allocate long stay places with a charge after 3 hrs	5/11/2016 3:22 PM
92	I feel that there is too little long stay car parking spaces. Signs could maybe be added that an overflow car park at the train station.	5/11/2016 2:20 PM

Gourock Town Centre Parking Survey

93	The space on Lower Kempock Street has increased by over 40 spaces, there was never any problems on that level before in terms of space and there certainly aren't any now. Why make restrictions where there are more space? This is purely a money making scheme by the council. So far I have had one ticket and no money will be forthcoming whilst it is under review and especially not when the Greenock Telegraph publicly stated that thus far, over £100,000 of parking fines in Inverclyde have gone unpaid.	5/11/2016 2:06 PM
94	The signposting is not very clever, especially exiting the car park, also having to go back onto the main road if I need to park at the station area . The effort to improve parking is appreciated, but it does need tweaking.	5/11/2016 1:52 PM
95	Spaces for pool and gym are usually full which creates problem for visitors without disc, system is too localised.	5/11/2016 1:46 PM
96	make the main car park unlimited all day as it was before the council imposed the three hour stay	5/11/2016 1:44 PM
97	Drivers are still entering car park from wrong direction. Maybe a camera could catch offenders. There is an accident waiting to happen	5/11/2016 12:59 PM
98	DISAGREE STRONGLY WITH PAYING FOR PARKING _ IT IS NOT REQUIRED IN THIS AREA	5/11/2016 12:55 PM
99	Headache trying to park	5/11/2016 12:48 PM
100	Car parks should charge daily rate to encourage people staying for a short time to use streets	5/11/2016 12:43 PM
101	Although as a visitor I appreciate always getting a space, I recognise that it must be very difficult for workers and residents. It seems to me that the balance of spaces on Lower Kempock Street is wrong, with the disc zone being half empty but the non disc zone is without a space.	5/11/2016 12:42 PM
102	Kempock street should be limited to 15 mins no return within 3 hours. you need a quick place to stop when popping in to a business. If i drive past and there is no space to pick something up I will go elsewhere.	5/11/2016 11:42 AM
103	I am a resident that works nightshift and there have been times I have had to park in the 3 hour zone part and get up every 3 hours to move my car and times I have had tickets. Residents should have parking permits	5/11/2016 11:03 AM
104	Some people use the lower-park lot to leave their car or even second cars for few days, not letting others to use the car park for others which does not help. This should be looked into and changed. More all day free spaces are required, as at the moment are very little.	5/11/2016 10:58 AM
105	Have free all day parking for residents and charge others for all day parking.	5/11/2016 10:46 AM
106	Awful parking conditions. Needs to change. Having to move my car several times throughout the working day causing disruption to my work.	5/11/2016 10:45 AM
107	Th current rules are sufficient and people just need to observe the limits and restrictions that are in place	5/11/2016 10:41 AM
108	Perhaps raising the time limit of 3 hours to 4 would be good, perhaps a little more all day parking might make better use of the Car Park. Yesterday though I noticed that there were only perhaps 6 spaces available in the whole car park so maybe its working fine.	5/11/2016 10:23 AM
109	Perhaps an extension of the longer stay parking may alleviate some of the problems. Easier access to Network Rail parking to encourage train commuters to actually park there	5/11/2016 10:11 AM
110	I feel the new parking arrangements and the new road layout have made the kempock street area easier to drive in and to park.	5/11/2016 10:11 AM
111	I would recommend that members of Inverclyde Leisure are given permanent parking stickers for the car park. I recently was ticketed in the 3 hour zone because I couldn't get a space near the gym and forgot to display my parking disc.	5/11/2016 9:41 AM
112	Scrap the 3 hour thing it's ridiculous I don't even go down there every day and I can see that it's mental to have people search for a space in the long stay when half of the car park is empty. Just let people use it for as long as they want. U will find the turnover will still meet people's needs and stop trying to make money off of people.	5/11/2016 9:24 AM
113	New parking is far better than it was previously (before new road layout). All Gourock needs now is a better range of shops.	5/11/2016 8:59 AM
114	The free long term parking spaces being used up early morning by commuters. provide more parking free at the gourock train station end.	5/11/2016 8:57 AM
115	signs are confusing. Discs won't be onhand for non locals who risk being fined while they go to find a disc.	5/11/2016 8:27 AM
116	Users of gym and gourock pool are parking in all day spaces. They should be in 3 hr spaces but they are not going to park at opposite end and walk. There are too many 3 hr spaces and not enough all day. Most of the time the 3 hr zone is empty and the all day zone crammed full.	5/11/2016 8:19 AM

Gourock Town Centre Parking Survey

117	In the short time the new arrangements have been in place things have definitely improved , we all don't need to take our vehicles right into the premises being visited	5/11/2016 7:30 AM
118	Change the all day parking area outside Gourock Pool to a 3 hour area as persons using the gym and pool dont normally use the facility for more than 3 hours.	5/11/2016 6:52 AM
119	Got to constantly move my car and had a ticket. I am a resident and these current arrangements are dictating my life. These are contributing to my feelings of moving to another area. Residents permits would solve a lot of issues.	5/11/2016 6:28 AM
120	Differing parking regulations confusing especially for visitors.	5/11/2016 2:28 AM
121	Increase number of spaces that do not require a parking disc! Impossible to find a place where I can stay for long enough!	5/11/2016 12:41 AM
122	off-topic, but we badly need a no-entry sign at entry to the 1-way going towards Greenock. Also, I'd support limited # of residents / shopkeepers permits for longer-stay zones.	5/10/2016 11:49 PM
123	Usually all the long stay parking is full so restricted to the 3 hour spaces. Would usually go for lunch and shopping but feel restricted now so puts me off going to Gourock.	5/10/2016 11:33 PM
124	I would appreciate a reply to [redacted] as I have emailed in the past without getting a response. Thank you	5/10/2016 11:21 PM
125	[redacted] parking attendants [redacted] are going to cause people to drive past Gourick and stop supporting local businesses.	5/10/2016 11:11 PM
126	The nonsense that has occurred with changes and parking systems is Shocking. I used to live in Gourock and now no longer use the front for lunch / dinner, shopping or evenings out as the parking restrictions do not give me time to relax without worry of a ticket. Never mind the added hassle of remembering the clock thing and were and what the different restrictions apply. what was once a pleasant home coming has no lead to me meeting out of the town I grew up in.	5/10/2016 11:09 PM
127	Whilst I would agree that a small area of the car-parking needs to be limited to three hours to ensure some turnover of spaces, the current area designated for this is too large. We need to be able to encourage people to spend longer in Gourock to shop, have lunch, enjoy a walk, go for a swim in our lovely pool etc. At the moment because of the restrictions and the ever present parking attendants we are actively discouraging people from spending any time in Gourock. Do we really expect people to leave the pool, dry off, change into clothes and go move their car every three hours? People want to spend all day at the pool in good weather! There is a climate of 'while you may find a parking space, you better hurry up and get out or you will have a fine'. The system is also impossible for non-locals to comprehend! They have no idea about the parking discs; what they are, how to use them or where to obtain one. They are wandering into shops totally confused and asking how they can park or worse still return to their cars and find a parking ticket. Certainly not encouraging people to enjoy the towns facilities and attractions. A better solution must be found!	5/10/2016 10:49 PM
128	People will always want to park as near to their work as possible. Identifying who actually needs a car outside the door and who can park further away will help. Due to the nature of the way that Gourock has developed folks that live at Castle Levan and up by Amazon, St Andrews drive etc will assume that they have a right to drive everywhere. They are unlikely to walk or take the infrequent [redacted] buses	5/10/2016 10:41 PM
129	New parking has optimised the spaces available	5/10/2016 10:39 PM
130	Parking permits do not encourage people to shop anywhere in Inverclyde. It's no wonder so many businesses are struggling! Especially when you can't travel half an hour to Breahead and park all day for free, with no restrictions and a number of shops to shop in!!	5/10/2016 10:37 PM
131	confused by parking sign rules.	5/10/2016 10:24 PM
132	I don't understand what the fuss is all about.	5/10/2016 10:23 PM
133	Parking should be free .	5/10/2016 10:12 PM
134	The 3 hour parking should be half the size and the other spaces used for all day parking.	5/10/2016 10:08 PM
135	New to the area, I didn't understand the parking time sign to put in the car. I imagine tourists wouldn't either, clearer information may help this. I think perhaps an hour and a half would be better than 1 hour to allow visitors to have their hair done/ pick up milk as quite tight within an hour.	5/10/2016 9:52 PM
136	The west spaces at swimming pool should not be all day ,but 2 or 3 hour parking	5/10/2016 9:40 PM
137	The lower Kempock carpark is for those using the shops , if the time limit is extended then it will become a park & ride for those working out of town and who contribute nothing to the local amenities. There is a problem with those who park at fast food outlets the south side of Kempock st should be strictly no parking .	5/10/2016 9:34 PM

Gourock Town Centre Parking Survey

138	I no longer visit Gourock as often as I did since you brought in these ridiculous parking measures. I can't keep up with all the rules and don't want a ticket.	5/10/2016 9:20 PM
139	. My perspective is as follows. Residents permits (lower Kempock st car park only) Business owner permits (NO We can use £1 per day car parks and leave spaces for our customers) Lower Kempock street. Change from 1 hr to 3 hr Kempock St - unchanged Lower Kempock Street car park. Change ratio 75% free. 25% 3hr. This last option (25% 3hr) is absolutely key to the success of Gourock. I will try to explain.. If there is no restrictions in the car park. Residents / staff / owners will block spaces all day. Rail customers will also block spaces all day. Gourock pool/gym will also take advantage of all day free parking. Where do customers / visitors park ? No control = chaos We run the risk of being so free with parking that Gourock turns back to what it was like before the restrictions.	5/10/2016 9:07 PM
140	if it has not been done already, sorry forgot to look on saturday take the horrible sign from outside studio flowers	5/10/2016 9:04 PM
141	Remove the sign that blocks the Studio Flowers shop. It is an eye sore and completely unnecessary!	5/10/2016 9:01 PM
142	I find that I can park easier than before the down was redeveloped. I can park for a short time to do what I need to do in the town. It was very difficult to get a space when the car park had no time limit on it. People where parking all day.	5/10/2016 8:56 PM
143	Gourock will follow greenock into the gutter due to your silly rules. parking will not be a problem in greenock/gourock in the next few years as all the shops close.	5/10/2016 8:48 PM
144	I'm fed up having to move my car from 3 hr parking space to all day space after 5 when people leave their work.	5/10/2016 8:01 PM
145	THE CURRENT PARKING SYSTEM HAS RESULTED IN A KNOCK-ON EFFECT OF WORKERS FROM KEMPOCK STREET (CAL-MAC, RAILWAY USERS AND GYM USERS) PARKING ALL DAY ON THE NEARBY NON-DISK STREETS, NAMELY BURGH WALK, BATH STREET AND ADELAIDE STREET, CAUSING DIFFICULTY FOR RESIDENTS TO PARK. IT IS NOT ONLY A PROBLEM FOR KEMPOCK ST RESIDENTS AND SOMETHING SHOULD BE DONE TO RECTIFY THE PROBLEMS THE RESIDENTS IN THOSE STREETS MENTIONED NOW EXPERIENCE EVERY DAY.	5/10/2016 7:58 PM
146	As a longtime resident of Gourock,I think the parking is really good now and I find an hour is long enough.	5/10/2016 7:36 PM
147	If you cannot extend the parking times then more spaces need to be designated for people who work or live on Kempock Street	5/10/2016 7:31 PM
148	disappointed that non disabled park in disabled spaces, and parking on double lines this also applies to narrow roads in gourock.	5/10/2016 7:23 PM
149	I have lived in kempo st for over a decade and before the road was made into a one way system there was never an issue for residents parking. The issue is now a major one which is extremely unfair.	5/10/2016 7:17 PM
150	No charges but limiting time will mean people will use the town centre more. I would not pay to park to go to a shop.	5/10/2016 7:15 PM
151	Workers/residents should be allocated long stay spaces or given permits for extended parking times. I work on Kempock Street and regularly struggling to find a space near my workplace.	5/10/2016 6:59 PM
152	Re disabled spaces, ever second space (needlessly - bit of over provision) in Kempock St seems to be a disabled space and still that wee blue car parks on the double yellows 10m from the closest one.	5/10/2016 6:47 PM
153	The parking in Gourock, with all these restrictions, are a disgrace. The station set up is a shambles and the disc zones are a complete joke. This won't increase tourism, it will make it fall. In any occasion, Gourock, Greenock, anywhere, I'd rather find a back street or something to park than pay the money, so you are also making it more difficult for residents in the surrounding area (Bath st for example) as people who work are parking there to avoid getting fines from the wardens. On that note, r	5/10/2016 6:39 PM
154	Removal of the cordoned off parking bay that was granted to someone, as I never see this bay actually being used when I have to drive around seeking a parking bay. This is special treatment for someone who probably knows someone in the council!	5/10/2016 5:39 PM
155	I don't consider 1 hour long enough to park if you are at pool, gym or out for a meal	5/10/2016 5:12 PM
156	I live in Ashton Rd and am not affected but residents in town centre have problems parking due to commuters using all day free parking in lower Kempock St.	5/10/2016 4:42 PM
157	if you dont come from Gourock or Inverclyde then it is easy to fall fowel of the parking enforment. i.e where do you get the parking discs etc.	5/10/2016 4:39 PM
158	A clearly marked box with parking discs for visitors would help. Many are bamboozled. Car park is MUCH better, though.	5/10/2016 4:39 PM

Gourock Town Centre Parking Survey

159	I work at Gourock pool and the feedback from customers is that they can't enjoy a day out as they are restricted. I also travel by car to work and can't get out to move my car every 3 hours. I think that there is plenty of spaces that would be available without the three hour limit enforced as residents park in the unlimited spaces and customers for pool/kempock street business are limited. The residents could park further along unlimited and then public could use nearer side.	5/10/2016 4:35 PM
160	We never had parking restrictions in the car park before. I think the new system will put off residents and tourists. Disc system is completely unnecessary and inconvenient.	5/10/2016 4:35 PM
161	As a resident at castle gardens with no off street parking for residents parking is increasingly difficult as all workers/business owners and visitors are parking in and around bath street. Parking with permits for residents should be brought in as was the case in greenock town centre as residents have little chance of parking near there homes which is a nuscience especially carrying shopping etc. More parking attendents should be on this area if this was brought into play.	5/10/2016 4:31 PM
162	I think that the residents and local businesses should be entitled to their own parking area. This would free up public spaces and prevent them from being penalised for parking near their home or business.	5/10/2016 4:24 PM
163	There was supposed to be a great deal more parking spaces at the station area but this seems to have all gone to rail track!! What happened there?? IF this had been done we would not be having the problems in Kempock street as we are having now.	5/10/2016 4:13 PM
164	I find that since the redevelopment the car park is ideal with the short and long stay compared to the previous all day parking.	5/10/2016 4:07 PM
165	Provide diagonal parking, wider pavements and traffic calming on Kempock Street to make it a more pleasurable experience. Plus start enforcing Lorry restrictions and generally keep lorries out of town by introducing time limits for traveling through.	5/10/2016 4:03 PM
166	far too many signs and sign posts in nnew by pass, Railings block view from cars so difficult to see entrance to car park by pool, exit from bypass wrongly designed from free flow point of view. Entrance to rail station almost invisible to strangers and ther is plenty spare capacity in there that is not obviously available.	5/10/2016 3:37 PM
167	I thin this is a great way to find out how parking is going but would like to know why there wasn't one done for Greenock to get peoples views of the parking there, as Greenock have a lot more restrictions in place and a lot of unhappy residents, workers and visitors.	5/10/2016 3:34 PM
168	You are destroying the gym and pool for users. People like to spend a long time there and can only park for 3 hrs. Also I sometimes leave my car behind cafe on a Saturday night and collect it on a Sunday and can no longer do this therefore rather than take my car to gourock from inverkip for a night out I get the train and spend my money there instead. I have already complained to the council about this.	5/10/2016 3:32 PM
169	My father lives in Kempock Street and if I want to visit him for the day, I would like to be able to get an unlimited free space, if this is not possible I have to move my car every 3 hours. There are not enough free places to accommodate the residents and they need to move their cars too, they need permits.	5/10/2016 3:29 PM
170	The parking disks are rubbish and fiddly to use and are easy to set incorrectly.	5/10/2016 3:24 PM
171	Review parking area for Gourock pool and gym	5/10/2016 2:27 PM
172	The amount of empty spaces I see on a daily basis in the car park at the pier head is shocking. People are reluctatnt to pay for parking when they have not done so for so long so they end up parking up in the residential streets which tne causes problems for residents. I think it has been a hugh error on the councils part introducing the charges.	5/10/2016 2:25 PM
173	The council need to look at increasing the number of spaces in the long stay car park. There is also the issue of confusion of what carpark is who's ie council or Scotrail and the duration of stay. The parking disc idea is a bit of a shambles as you could put any time on the disc before you leave.	5/10/2016 2:12 PM
174	Do a survey on the quantity of spaces that residents are seeking and see if a residents' parking badge scheme is compatible with town centre visitors', shoppers' and swimmers' requirements.	5/10/2016 2:11 PM
175	Overall the parking in Gourock is generally good but long term council must try and move away from these time clock discs. Visitors outwith the area may not know about them and park regardless. Enforcement of the parking rules must be monitored and used with "friendly discretion" and to apply some "grace" time with common sense.	5/10/2016 2:09 PM
176	I think the new one way system and the parking has made a huge difference to Gourock	5/10/2016 2:08 PM

Gourock Town Centre Parking Survey

177	The entire parking scheme across Inverclyde has been an ill considered mess, implemented badly and then backed out of and repeatedly changed for all the wrong reasons. I absolutely agree with parking controls. They need however, to be clear, consistent, long term and enforced. 1/ Have a standard restriction of 1hr in all controlled areas across Inverclyde. There is nothing here that requires more than 1 hr unless you have a blue badge. If something is worth more than an hour, it is worth walking to. 2/ The mix of short and long term parking in Lower Kempock Street is back to front. Short term should be beside the pool and long term beside the station - that's the natural order. You can argue that the station has a car park etc, but the fact is, most train users parked at the Sainsburys end of the car park and ran for the train with minutes to spare. Now we clog up the west end around Fort Matilda instead. 3/ Rigidly enforce all the restrictions and be seen to do so. 4/ Don't allow the councillors to buckle and give in to the noisiest members of the electorate (who are probably the worst parkers too). That's it. Thanks for the opportunity to speak.	5/10/2016 1:57 PM
178	Wasn't a fan but I have to say it seems to be working well. Even on lower kempock street where quite often the traffic stops to let you cross.	5/10/2016 1:45 PM
179	We live in ϵ and are finding it increasingly difficult to park on Bath Street as everyone wanting to visit Kempock Street, whether for shopping or working, are using our spaces. I am disabled and am finding that I am having to park further away and therefore have longer to walk to my home. It's therefore limiting me to goin out once a day at the most as i can't handle going out more than once a day!!	5/10/2016 1:35 PM
180	The new road and work on the town centre have been very good for the town centre. The parking rules have been changed too many times and not given enough time to bed in and see if they work.	5/10/2016 1:33 PM
181	Parking in gourock is horrendous now!!! The 3 hour spaces lie empty all day. Starting work in gourock at 8am and you can't get parked!!!!	5/10/2016 1:28 PM
182	There was no need put restrictions in place on Lower Kempock St car park. When the car park was originally opened the restrictions were not in place and there was absolutely no issue with parking. The restrictions have caused the problem.	5/10/2016 1:26 PM
183	As i use the swimming pool i need more than one hour of parking. I have to park at the far end of the gourock pool where there are no restrictions and walk. A fair few people do this but it then causes other people not to be able to park outside their own house.	5/10/2016 1:26 PM
184	How is the council encouraging people from outside the town to visit. When we have 3 different parking zones. And making them walk to the shops to get one of the STUPID parking disks. Not a good idea if you have small children or disabled. Its also not very good business for the town or swimming pool if people have to move their car after after 3 hrs. I must say the council is going about it in the right way to drive people out of gourock and greenock also. Scrap the stupid parking restrictions	5/10/2016 1:25 PM
185	Visitors must have easy access free parking or they will bypass the town.	5/10/2016 1:22 PM
186	Gourock is a brilliant town to visit however due to the parking limit restrictions it's now very off putting to visit, I do agree the upper part of kempock street should stay on the limit but the lovely new car park on lower kempock street should not have a parking limit	5/10/2016 1:21 PM
187	You have spent all this money on improvements ,but you have not lowered the pavement for the disabled parking diaces on kempock st you gave to walk on the road to the traffic lights at Sainsbury to get a wheel chair on to the pavement	5/10/2016 1:17 PM
188	birds pooped on my car. Something must be done to curb this aerial fecal menace.	5/10/2016 1:09 PM
189	Remove time limits	5/10/2016 1:03 PM
190	The requirement to displays parking discs is clearly not working, it's confusing and has resulted in a large number of parking spaces lying empty thereby putting pressure on the few unrestricted spaces left. The whole scheme would also appear to discourage visitors from visiting and spending time in Gourock.	5/10/2016 12:55 PM
191	The main problem in Kempock St (upper) is drivers who park illegally on the double yellow lines and also double park. This needs to be better enforced. There is no point in creating a one way system when you still struggle to drive through at times.	5/10/2016 12:54 PM
192	As there wasn't a problem for parking in the lower car park before I feel no time restriction is required	5/10/2016 12:53 PM
193	This problem has move some parking onto areas just off the street. Thsi is then causing problems for residents in these areas especially during the day	5/10/2016 12:52 PM

Gourock Town Centre Parking Survey

194	I feel there are at present too many different parking restrictions in place for such a small area which is confusing many people. Reducing parking to any less than 3 hours would kill trade in Gourock which is known for it's cafes/restaurants. If I had to pay to park locally (when I previously had no problems getting a parking space when it was free) I would simply go elsewhere, like Braehead, with free parking. The whole system with the cardboard discs are a joke and I've lost track of the number of times I've heard out of towners complain that they have to leave their car, without a disc, to try and locate a shop which has some, all the time risking getting a ticket! I also cant believe you've included an option at question 7 to "encourage" workers to park further away - would this be the same way workers in Greenock town centre have been "encouraged" (i.e. forced)? Why on earth should they be penalised!!	5/10/2016 12:44 PM
195	Virtually no long term spaces as the car park is always full while the short term area is empty.	5/10/2016 12:34 PM
196	Need more spaces for workers and residents. Not convenient finishing at 1.30am at night and having to walk far to get to your car.	5/10/2016 12:29 PM
197	I'd be interested to know why the parking restrictions in the rest of Inverclyde are from Monday to Friday but in Gourock it's Monday to Saturday	5/10/2016 12:25 PM
198	People working in kempock st need alday parking more long stay parking bays required for workers it cost me a pound every day to park and I cannot sustain this charge. The short stay bays are always empty or not used to full capacity.	5/10/2016 12:24 PM
199	Saying on the road it is a free three hour area , there must be somrthing very prominent whe entering this area you need a disc , people just don't know that if they are a stranger .	5/10/2016 12:21 PM
200	I can't understand or justify why the restrictions are in force on upper kempock street from monday to saturday when greenock is much busier and is only restricted monday to friday, does not make sense!	5/10/2016 12:19 PM
201	business shops residents took all the spaces and no one could parks its better now	5/10/2016 12:15 PM
202	It's not simply turnover but really number of spaces generally - an hours turnover isn't much use if shopping will take longer than that. All that means is that, yet again, I'll not bother shopping in Gourock and will just go up to Greenock or Glasgow.	5/10/2016 12:14 PM
203	It is despicable that all the Labour councillors vetoed Christopher Mc Eleny's efforts to gain residents parking permits. I am sure none of you have problems parking near your homes and also I'm sure you know there are many elderly and infirm residents who live here for whom parking is a daily nightmare. Many have just stopped going out. I hope you are proud of yourselves. selfish people.	5/10/2016 12:12 PM
204	it is disgraceful how shopkeepers are allowed to block the roadway with parking cones for hours and therefor deny shoppers and disabled people a legal parking space . this happens on a regular basis and nothing id done regarding this illegal act .	5/10/2016 12:10 PM
205	The new system is a big improvement. It has been money well spent. Too many Nimbys will always complain. I love it.	5/10/2016 12:08 PM
206	As a resident of Bath Street, I often find it really difficult to park nearby which is extremely inconvenient when moving heavy items or returning with shopping for instance. I work in the vicinity using my car and need to return home a few times in a day and spend quite a bit of time looking for spaces or walking to and fro when parking futhther away. I have noticed many more commuters parking in the residential streets whilst empty spaces in the station car park since the parking charges were introduced.	5/10/2016 12:06 PM
207	There are not enough long stay spaces in the lower Kempock Street car park, I work in Kempock St and can never get a space I have to use the short stay and move my car every 3 hours sometimes it's not possible to do this as I may be in meetings this has resulted in me having 3 tickets issued since the new regulations came into force. The lack of long stay spaces for workers in Kempock st is causing issues for residents in other areas of Gourock, a number of my colleagues are parking in the bath Street area causing issues for residents who live there. The council has to remove the 3 hour limit and allow all day parking	5/10/2016 12:05 PM
208	Parking area for workers is needed as they use up residential car parks in Adelaide Street and Burgh Walk! Residents find it so hard to park now	5/10/2016 12:05 PM
209	I work along Kempock street, but people who work there cannot be expected to walk out on a shift every 3 hours in order to move a car. Served a customer & his wife who were not from the inverclyde area but had parked in the car park. They ended up getting a fine because they were unaware of the parking regulations. So that's a couple who won't be back! It's a deterrent for people who would usually come to Gourock during the summer as the all day spaces are usually taken up within the first few hours of the day or are taken up by residents & those who do come are completely unaware of these regulations! Dont agree with the idea at all.	5/10/2016 12:03 PM

Gourock Town Centre Parking Survey

210	I didnt think the need to have these parking restrictions in pmaxe as i have been using shops on kenpick street for years and have never struggled that much to get a space. This going hand in hand with the increase it the lower kempock street car park and also the train station car park. I struggle even more to understand why this has been brought into play. My opinion is that it is a waste of money as you now have to pay the wages of parking attendants to constantly walk round taking notes of cars that come and go. It a waste of public finances that could be better spent else where. The council has improved the area by providing more parking and turning it i to a safer one way system. It should have been left at that with the same original free parking with no restrictions.	5/10/2016 12:03 PM
211	I work at the Gourock Pool and Fitness gym and if I cannot find a long stay space I have to park in the 3hr stay area. I am not supposed to leave the facility during my shift (which can be up to 9hrs) and I have to leave to move my car to avoid a fine. Many of my colleges have been fined due to this problem. When ever I drive through the 3hr stay area there are always many free spaces for people to park in. I suggest bringing in working parking permits to display in car windows and to extend the long stay area into the 3hr area.	5/10/2016 11:57 AM
212	Can't get parked at doctor for people parking in their to	5/10/2016 11:56 AM
213	is having an impact on albert road, with increased pavement parking	5/10/2016 11:54 AM
214	Parking Wardens are targeting Gourock rather than where they are needed.	5/10/2016 11:51 AM
215	the short stay car park should have been to the west end of the car park which is mainly used by the gym and swimming pool not enough spaces provided for residents	5/10/2016 11:46 AM
216	People who are dining in the area need more than the one hour but dont need more than three hrs	5/10/2016 11:36 AM
217	More, Better parking for people who use the pool as there is inadequate poolside parking during pool season.	5/10/2016 11:34 AM
218	Most definitely not parking further away. Albert road is already impossible to park on due to visitors parking there as they can't get parked in the all day spaces. Survey would be more productive if it tried to find out why the all day parking spaces are full before Kempock st workers or shoppers need them. Take a look at train and ferry users for that one. Sort the station car park and you solve Kempock st. That had always been the problem. Cause and effect, it's not difficult.	5/10/2016 11:33 AM
219	the balance between long stay and short stay is wrong. Letting someone install their own parking 'post' is plain wrong	5/10/2016 11:31 AM
220	Do away with the time zone disc. Re-address the amount of disabled parking spaces that have been allocated.	5/10/2016 11:28 AM
221	Should try get people who use train to park closer to station with cars that they leave all day	5/10/2016 11:17 AM
222	The spaces in the car park designated for 3 hours max are hugely underused; it is therefore not making the money in parking fines that the council is looking for and it would make much more sense it make the majority of these spaces free to allow the many residents and workers in the area to park for free, as they should be able to do, leaving the 3 hour max spaces for those who are shopping in the area. The small allocation of free spaces is not enough for all the residents and workers in the area.	5/10/2016 11:16 AM
223	I would like to see a permit system for the people who live in Kempock street and Albert Road so they an park their cars for longer when they are at home, I think most people would be willing to pay a small yearly fee for this	5/10/2016 11:15 AM
224	The whole one way system is dire, no one way system signs displayed. Lots of drivers treat the lower kempock road as a 15 mile an hour car park thus causing traffic problems , this is a main A road for goodness sake. I personally now prefer to visit Greenock Tesco for smaller shops where I used to use Gourock due to parking . The parking has killed Greenock and now Gourock . What a waste of money this whole system is. Return road to 2 way would be one solution.	5/10/2016 11:14 AM
225	I am a resident of Albert Road and affected by this. The all day parking in the lower car park is full first thing in the morning. As a result visitors, especially to the gym or pool, park in the next available all day parking spot - Albert Road. The space in front of the station needs to be better utilised as well as it is under used due to charges.	5/10/2016 11:11 AM
226	The hour limit is a great idea for the lay-bys on upper and lower kempock street but the carpark does not require any restrictions- ite causing a lot of bad feeling in Gourock and putting people off using the shops. I was planning on spending my day at the Gourock pool and couldn't get a unlimited time space so had to move my car after 3 hours which was extremely annoying and upset my day. There is enough spaces in the lay-bys for a good turn over for the shops with people 'nipping in' to shops. The carpark should be free the way it always was, there was no problems until these restrictions came into place.	5/10/2016 11:01 AM
227	I think the current arrangements help the turn over of spaces which helps local business	5/10/2016 10:54 AM
228	get rid of the discs, they discourage anyone from visiting who isn't a resident of inverclyde and doesnt have a disc	5/10/2016 10:52 AM
229	There is insufficient long term parking for residents and workers and too much 1ht and 3 hr parking. There is nowhere else for workers and residents to park that is not used by other residents. By simply swapping the 3hr and long stay areas it would ease the current problem.	5/10/2016 10:48 AM

Gourock Town Centre Parking Survey

230	I think the parking restrictions in Gourock has benefitted the town. I find it much easier to park in Kemock St for shopping etc. Also the one way system makes such a difference. Is definitely positive	5/10/2016 10:20 AM
231	Workers should be encouraged to either park further away or use the "£1 per day" spaces. I work in Glasgow and if I take my car I would love a £1 per day parking space, instead I need to pay a tenner a day. I think the parking works well in both Greenock and Gourock and by having more short stay spaces it would encourage people to stop off more.	5/10/2016 9:26 AM
232	Across Inverclyde lets have one rule for Off Street - parking - £1 per day everywhere and 2 hours on street with no return in 1 hour. inconsistency between towns too confusing.	5/10/2016 9:19 AM